

THE LEGACY THEATRE
2023 SEASON



**THE MUSICAL OF
MUSICALS**
THE MUSICAL!



Marcum is thrilled to support

THE LEGACY THEATRE



MARCUM
ACCOUNTANTS ▲ ADVISORS

marcumllp.com

.....

WE SUPPORT THE ARTS

AT THE LEGACY THEATRE

.....

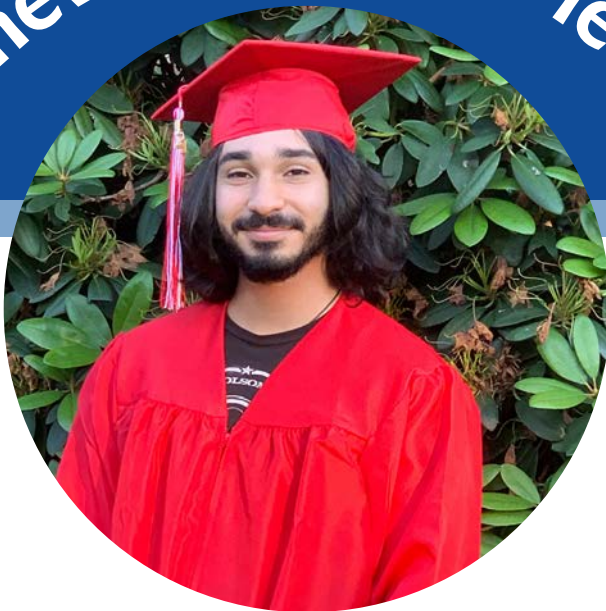


iHeartMEDIA

CONNECTICUT



It's never too late to learn!



FREE ACADEMIC CLASSES

High School Diploma / GED®

English for Speakers of Other Languages

U.S. Citizenship Preparation

AFFORDABLE ENRICHMENT CLASSES

Computers | Arts & Crafts | Cooking | Retirement Planning

| Health & Wellness | Music & Dance | Mind & Spirit |

World Languages | Classes for Kids & Families

Shoreline

ADULT EDUCATION

(203) 488-5693



SCAN ME!

SHORELINEADULTED.ORG

Letter from the Artistic Director



Dear Friends,

How many showtunes can you name? When you think of musical theatre, what stories, divas and composers do you think of? No doubt how varied our collective answers are, you are sure to find a sweet nod to one of your ole faves in this *Musical of Musicals* (*The Musical!*). A celebration of all things the great Broadway has gifted us over the decades, I am honored to entertain us all with this production at Legacy Theatre. Featuring a director who has met and worked with more Broadway celebrities than most of us could ever name, Colin Sheehan is the perfect guest director for this hilarious feature. Playing alongside performers who are no stranger to revues (including the two co-founders of Legacy Theatre live on stage together!), we hope the enjoyment we have shared in our weeks of rehearsals is as contagious as Adelaide's psychosomatic symptoms (if they weren't psychosomatic, that is!). This larger-than-life love letter to the Great American (and West End) Musical is our love letter to *you*. Thank you for being our audience and for spreading your love of Legacy!

Warmly,
Keely Baisden Knudsen
Artistic Director & Co-Founder, Legacy Theatre

Welcome to Legacy!

Follow Legacy on social media!

 facebook.com/LegacyTheatreCT

 [@legacytheatrect](https://instagram.com/@legacytheatrect)

 [@legacytheatrect](https://twitter.com/@legacytheatrect)

Legacy Wi-Fi

Network: LTC GUEST
Password: GestWiFi!

Gift Certificates and Merchandise are Available at the Box Office!

At This Theatre



c. 1890s



c. 1930s



c. 1930-1940s

- 1866 A small, non-denominational church was built at 128 Thimble Islands Road in the village of Stony Creek in Branford.
- 1900 A fire damaged the property.
- 1914 The land is sold to William Howd and the foundations were laid for a silent movie theater called Idle Hour Moving Pictures.
- 1923 A theater group belonging to the Stony Creek Church of Christ called the Parish Players was forming.
- 1928 The Parish Players purchased the movie theater space, and repurposed it to “live” theater for the first time. Productions included the world premiere of *Death Takes a Holiday* as well as *Private Lives*, *Merrily We Roll Along* and *Pygmalion*.
- 1938 Orson Welles wrote and directed a silent film to accompany his direction of William Gillette’s 1894 comedy *Too Much Johnson* at what was now the Stony Creek Theatre.
- 1946 The theater building became home to Panix/Materna-Line, Inc., a designer and manufacturer of corsets and the like.



Stony Creek Theatre production of *Too Much Johnson* (1938)

At This Theatre



1946



c. 1980s - 2010s



2021

1961 Grace Weil established the space as the Stony Creek Puppet Museum with life-sized Sicilian puppets direct from performances in Italy. Grace Weil's son, Jim, and Italian Salvatore Macri, were the next to put their mark on the theater. With their rare and cherished skills of puppetry, the Italian puppets came to life.

1970s-2010s Classes and theater were in abundance under Jim Weil, Barry Fritz, the Alliance Theatre, Joe Davis and others. Passing on the legacy of theatre to others is a stronghold of the Legacy Theatre, which purchased this theater in 2013--and now you are part of its ongoing Legacy.

2021 Legacy Theatre, a repertory company with a conservatory arm, opened the restored theatre for performance and training. From nothing but a dream and a vision to now teams of committees, boards of directors and advisors, actors and teachers, this shoreline gem has been restored and revitalized. We at Legacy invite you to continue with us as we commemorate the past and spotlight the future of this special stage.



Jim Weil
(1960s-1970s)

Explore more about
AT THIS THEATRE
on the Legacy website!

Photos, video and more!

Scan This
QR Code:



Or visit
LegacyTheatreCT.org/history

wshu | Public Radio

“Love the
classical music ...
and NPR ... and local
news coverage.”

William & Susan, Wilton, CT

think. learn. share.

wshu.org



THE LEGACY THEATRE

JEFF PROVOST
Managing Director

KEELY BAISDEN KNUDSEN
Artistic Director

present

THE MUSICAL OF MUSICALS

THE MUSICAL!

Music by ERIC ROCKWELL
Lyrics by JOANNE BOGART
Book by ERIC ROCKWELL & JOANNE BOGART

with
RANDALL DELONE ADKISON
KEELY BAISDEN*
KARL GASTEYER
STEPHANIE STIEFEL WILLIAMS*

THOMAS BEEBE CHRISTINE VOYTKO

Master Carpenter
RICH BURKAM

Sound Designer
ADAM JACKSON

Properties Designer
& Assistant Stage Manager
COLLEEN CALLAHAN

Scenic & Lighting Designer
JAMIE BURNETT

Costume Designer
JIMMY JOHANSMEYER

Stage Manager
SARAH PERO

Choreographer
PAOLA PACHECO RARICK

Music Director
BILL SPEED

Directed by
COLIN SHEEHAN

July 13-30, 2023, The Legacy Theatre, Branford, CT

Sponsored in part by



BRANFORD
Community Foundation



The Musical of Musicals (The Musical!) artwork design by James Morgan,
provided by the New York Producers from the original New York production of the musical at The York Theatre Company.

The Musical of Musicals (The Musical!) is presented by arrangement with Concord Theatricals. www.concordtheatricals.com



* The Actor appears through the courtesy of Actors' Equity Association, the Union of Professional Actors and Stage Managers in the United States.

Director's Note



What makes a story worth telling? Sometimes, meaningful stories are the ones which are most familiar to us. We the audience see characters which we are already familiar with, and we attach ourselves to them. Broadway legend, Ann Reinking, once told me that, "Dreams come true, just not the way you planned them too!" That quote pretty much sums up the last three decades of my life...

I fell in love with musical theatre in 1992 at seven years old when my Nana Banana, Kathleen Feerick O'Grady, gifted tickets to my entire family to see *Cats* on Broadway for Christmas. I remember so vividly arriving to the theater and feeling a certain exciting energy that was present all around. Upon entering, I received a shiny Playbill, and was ushered to our seats in one of the very last rows of the Mezzanine. All the while, I was using all of my senses to take everything in because I knew I would want to remember and re-live every last detail then, now and forever...

I soaked in every detail inside that theatre, from the intricate architecture filled with arches, columns, ornate molding and decorative trim, to the dramatic chandeliers, and the impressive, oversized junkyard that comprised the set... the list goes on and on... THEN, the house lights dimmed and the overture began, I inched forward to the edge of my velvet seat and became entranced with the atmosphere and art of musical storytelling. When the actors broke the fourth wall, while portraying Jellicle Cats, with the help of the amazing costumes, makeup, wigs, choreography, music and more, I was hypnotized and knew I had to be a part of this community and as soon as possible!

Well, it came very quickly... THAT DAY at intermission, I made my way down to the Orchestra level of The Winter Garden Theatre with my Aunt, Elaine Greenan, and had the chance to stand on a Broadway stage. I continued to analyze every artistic detail, set design, and technical element that I could get my eyes on. I got a peek "behind the curtain" and even in the wings where I saw people working. (Later on I learned that those people were stagehands, wardrobe supervisors, prop masters, stage managers, etc...) I was most enthralled with the character of Old Deuteronomy (played by Ken Page) who remained upstage center on the oversized tire "asleep" for the duration of the intermission. I stared at the actor in amazement, wonder and fascination.

The rest is history and I was bit by the bug, as they say, and soon after I began performing all over Connecticut, on television, and eventually achieved my goal of performing on BROADWAY! Okay... It was only for one night, but a very historic one, May 18th, 2003, in the original closing night cast of *Les Misérables*.

I have immersed myself and imagined escaping into the world of musicals and theatre for my entire life. My fantasies became reality and some days I have to pinch myself that this is real life. I am blessed to have a personal story about every composer/show that is represented in this fabulous love letter to Broadway. My most treasured memory being

Director's Note



that I have been in the room (and shared a drink) many times with my favorite composer, Stephen Sondheim. I even played a small part on the producing team for one of his most popular musicals... And I just LOVETT <hint, hint>!

The Musical of Musicals (The Musical!) tells a very simplistic, very recognizable story: a young woman cannot pay her rent to a villainous landlord, and the day is saved at the last minute by a strapping hero. What makes this musical and stories like it interesting is the way in which they are told.

The musical presents the same circumstances five times. Each time, the story is told in the style of a different legendary Broadway composer. So, the audience is treated to five stories which are simultaneously similar and entirely unique. For the avid Broadway fanatics and the more casual listeners in the audience, *The Musical of Musicals (The Musical!)* offers something familiar, something peculiar, something for everyone.

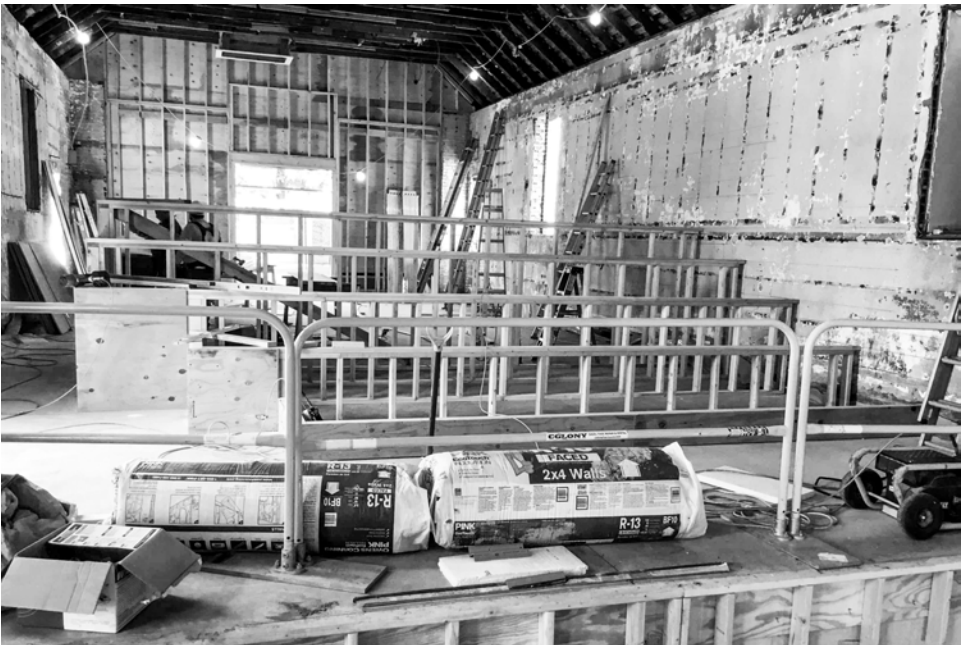
We took a minimalistic approach with *The Musical of Musicals (The Musical!)* so YOU can use your imagination to fill in your own design elements and get lost in the campy storytelling that the actors do so brilliantly on stage. This process has been extremely fun and a great reminder that we are all still “theatre geeks.” I can say that because I am involved in educational theatre at the Branford High School. I have been involved with Legacy Theatre in some capacity for the last decade. To be a part of this family and to see it come to fruition, during a pandemic, has been very rewarding. I am extremely grateful to be making my directorial debut here with this show; its sentiment and subject matter is very close to home and feels like a perfect match. My hope and goal with this specific show is to have at least ONE person fall in love with theatre for the first time (like I did many years ago), and then continue to support The Arts in their own special way, because the future of theatre belongs to you!

Remember to always DREAM THE IMPOSSIBLE DREAM!

This show is dedicated to every family member, friend, co-worker, collaborator and colleague that has continued to remind me that art changes lives!



Colin Sheehan
Director
The Musical of Musicals! (The Musical!)



WE ARE PROUD TO SUPPORT THE LEGACY THEATRE 2023 SEASON

2 Summit Place, Branford, CT 06405 • 203.643.1000 • www.orldconstruction.com



Dramaturgy



The Musical of Musicals (The Musical!) pays homage to a number of different musicals from different eras and styles. Some of these are instantly recognizable, while others are easy to miss. The show is broken into five different sections, each one written in the style of a different legendary composer.

CORN!

In the style of Rodgers and Hammerstein.

Some of the pieces referenced are:

- *Oklahoma!*
- *The King and I*
- *The Sound of Music*
- *Carousel*

A LITTLE COMPLEX

In the style of Stephen Sondheim.

Some of the pieces referenced are:

- *Sweeney Todd*
- *Into the Woods*
- *Sunday in the Park With George*
- *Company*

DEAR ABBY

In the style of Jerry Herman.

Some of the pieces referenced are:

- *Hello, Dolly!*
- *La Cage aux Folles*
- *Mame*

ASPECTS OF JUNITA

In the style of Andrew Lloyd Webber.

Some of the pieces referenced are:

- *Phantom of the Opera*
- *Cats*
- *Joseph and the Amazing Technicolor Dreamcoat*
- *Evita*

SPEAKEASY

In the style of Kander and Ebb.

Some of the pieces referenced are:

- *Cabaret*
- *Chicago*
- *Kiss of the Spider Woman*
- *Liza with a Z*



We know you're safeguarding **more than just your assets.**

**We can help you preserve and protect your wealth,
at your pace.**


Time to look out for more than your future? Our advisory practice is about the relationship we forge with you: conserving your assets, understanding the vision for your loved ones and seeing the big picture to fulfill your goals.

John H. Driscoll, Jr.
860.519.8183
jdriscoll@websterbank.com



WebsterBank®

[websterbank.com](https://www.websterbank.com)

Investment, trust, credit and banking services are offered by Webster Private Bank, a division of Webster Bank, N.A. Investment products offered by Webster Private Bank are not FDIC or government insured; are not guaranteed by Webster Bank; may involve investment risks, including loss of principal amount invested; and are not deposits or other obligations of Webster Bank. Webster Private Bank is not in the business of providing tax or legal advice. Consult with your independent attorney, tax consultant or other professional advisor for final recommendations and before changing or implementing any financial, tax or estate planning advice. All credit products are subject to the normal credit approval process. Webster Bank, the Webster Bank logo and the W symbol are trademarks of Webster Financial Corporation and Registered in the U.S. Patent and Trademark Office. Webster Bank, N.A. Member FDIC. Equal Housing Lender  © 2022 Webster Financial Corporation. All Rights Reserved.

Cast

Cast in alphabetical order by Actor

Willy	RANDALL DELONE ADKISON
Abby	KEELY BAISDEN*
Jitter	KARL GASTEYER
June	STEPHANIE STIEFEL WILLIAMS*

UNDERSTUDIES

Jitter/Willy	THOMAS BEEBE
Abby/June	CHRISTINE VOYTKO

* The Actor appears through the courtesy of Actors' Equity Association, the Union of Professional Actors and Stage Managers in the United States.

Scene

TIME: Present Day

PLACE: New York City... Off-Off-Off Broadway

THE MUSICAL OF MUSICALS (THE MUSICAL!) is performed without an intermission.
Approximate Running Time: 90 minutes.

Who's Who



RANDALL DELONE ADKISON (*Willy*) is excited to be making his New England stage debut. He has performed in regional theatres, cabarets, National tours, and off-Broadway. He has performed with luminaries like The Monkees, Crystal Gayle, Chuck Negron, and Johnny Rivers in their night club acts. Memorable stage performances include: King Arthur (*Spamalot*), Dr. Henry Jekyll and Edward Hyde (*Jekyll and Hyde*), Marquis De Sade (*Quills*), Raoul (*The Phantom of the Opera*), Frank N. Furter (*The Rocky Horror Picture Show Live!*), John Wilkes Booth (*Assassins*), the world premiere of *Ben Hur: The Musical*, off-Broadway with Tricicle's Three For All, and countless revues at The Voltaire Cabaret in Chicago. He was National runner-up in the 2004 National Society of Arts and Letters, American Musical Theatre Competition.



KARL GASTEYER (*Jitter*) is thrilled to be working with Legacy Theatre this summer. He currently teaches theatre and directs musicals at Hamden Hall. Before that, he was the Executive Director at the Klein Memorial Auditorium in Bridgeport, CT. Karl's long history in the theatre business includes producing shows for casino audiences from The Tropicana in Atlantic City to Foxwoods and The Mohegan Sun in CT and touring the US and Canada as a singer/ dancer/ actor. Karl also choreographs and writes for the theatre. He was last seen on stage as Chef Louis in *The Little Mermaid* and is thrilled to be in the cast of *The Musical of Musicals (The Musical!)* at Legacy Theatre this summer.



KEELY BAISDEN (*Abby*) To read Keely's bio, please view page 27.



STEPHANIE STIEFEL WILLIAMS (*June*) To read Stephanie's bio, please view page 27.



**FOR AS LONG AS WHEELS HAVE
ROLLED ALONG ROADWAYS,
AUTOMOBILES HAVE BEEN THE
INSPIRATION FOR GREAT THEATRE.**

Be it the fantastical flying car in *Chitty Chitty Bang Bang*, the pride of the T-Birds in *Grease* or, more recently, a gleaming, stainless steel DMC DeLorean in the Broadway revival of *Back to the Future*, automobiles have always played a starring role in theatre. At Palumbo's, we give your vehicle the red carpet treatment whether it's a rising star or a gracefully fading light of Broadway. Enjoy the show!

**BEST WISHES TO
THE CAST AND CREW FROM
THE ENTIRE PALUMBO FAMILY.**



1 (203) 453-1788 palumbosautomotive.com

Who's Who



THOMAS BEEBE (*Jitter/Willy Understudy*) is delighted to be joining Legacy Theatre for this production and more fun to come later this season. As an actor, Thomas has appeared at Hartford Stage, The Bushnell, Playhouse on Park, and Peak Performances, among other venues. Favorite credits include Max in *The Producers*, Barfee in *Spelling Bee*, The Chairman in *DROOD*, and Nicely-Nicely in *Guys and Dolls*. Thomas is also an accomplished teaching artist and director currently working with Hartford Stage. Thomas holds a BFA in Musical Theatre from Montclair State and an MA in Theatre Education.



CHRISTINE VOYTKO (*Abby/June Understudy*) is happy to join the Legacy Theatre family. Favorite performances include *9 to 5* (Violet), *Sweeney Todd* (Beggar Woman), *A Little Night Music* (Desiree), *The 39 Steps* (Annabella, Margaret, Pamela), *Boeing Boeing* (Gretchen), *Evil Dead* (Annie), *A Chorus Line* (Sheila), *Dirty Rotten Scoundrels* (Christine/Muriel), *Black Comedy* (Carol), *Bug* (RC), *Les Miz* (Madame T.), *The Rocky Horror Show* (Janet), *Wait Until Dark* (Suzy), *Anything Goes* (Reno), *Baby With the Bathwater* (Helen), *Rent* (Maureen), *Noises Off* (Belinda), *MOB* (Charlotte), *Chicago* (Roxie), and *Pippin* (Catherine). Special thanks to Hermit!!!!

COLIN SHEEHAN (*Director*) To read Colin's bio, please view page 31.

BILL SPEED (*Music Director*) spends most of his musical life as the Director of Music Ministries at the First Congregational Church of Guilford, helping singers, handbell ringers and instrumentalists to make a joyful noise. Trained as a geneticist at Princeton and Yale, Bill's alter ego as a conductor/organist/pianist has kept him performing locally with cabaret singers, and in recent years directing Guilford productions of *Fiddler on the Roof*, *Godspell*, and *Joseph and the Amazing Technicolor Dreamcoat*. You can hear Bill online Thursdays at noon for "30 Minutes of Joy," a weekly sharing of music begun during the pandemic. Bill lives in Guilford with his Dalmatians, Winston and Harley, and his partner, Mike.

PAOLA PACHECO RARICK (*Choreographer*) was born in Buenos Aires, Argentina. She was exposed to art at an early age by her father who was a writer and renowned director in Argentina. She has extensive training in Ballet, Tap, Musical Theatre, and Lyrical dance. Paola danced competitively for 10 years and was a member of nationally recognized, award-winning dance companies. She holds a BS in corporate communications from Southern CT State University. Paola has choreographed for various theatre companies over

the last decade. She serves/served as choreographer for Shoreline Theatre Company, Artful Living Productions, and Branford High School to name a few. Some of Paola's favorite choreography credits include, *Hairspray*, *Mary Poppins*, *Chicago*, *Anything Goes* and *The Producers*. Paola is so grateful to have had the opportunity to choreograph her first Legacy Theatre production and looks forward to working on *Beauty and the Beast* here at Legacy. Aside from her countless shows she has choreographed, she is Artistic Director and Owner of Studio One Dance Center in Branford for the past 15 years.

JAMIE BURNETT (*Scenic & Lighting Designer*) is a graduate of Carnegie Mellon University, recipient of the 2005 New Haven Arts award, and Founding member of The Elm Shakespeare Company. Lighting Designer at Elm Shakespeare for 26 years and Set Designer until 2009. Lighting Design credits include International Festival of Arts and Ideas 2018, *Requiem for an Electric Chair*; Iseman Theater 2017, *Never Stand Still*. CCT: *Skeleton Crew*, *Rasheeda Speaking*, *Jesus Hopped the A Train*, *Sunset Baby*, *Topdog/Underdog*. SCSU: *Stop Kiss*, *Much Ado About Nothing*, *The Boyfriend*, and *Our Country's Good*. SHU: *In The Heights*, *Jesus Christ Superstar*. Citywide Open Studios: New Haven Armory; Projects2k: Stamford Train Station Façade Lighting; Producer/Lighting Designer/Production Manager for Terra Tractus (*The Earth Moves*), (2005) *Terra Mirabilia*, (2001) *Terra Lumina and Terra Continuum* (1999): performed in the Stony Creek Granite Quarry; PNM's Branford Luminata (2010) lighting Branford Green Town Hall. His company, Luminous Environments, specializes in theater and TV studio renovations and public art installations involving specialized lighting. Recent projects: Branford HS Theater, Fairfield Community Theater, and Legacy Theatre.

JIMMY JOHANSMEYER (*Costume Designer*) is excited to be back at The Legacy Theatre, after being seen in *Just Desserts*. Most recent design credits include *The Great Gatsby: A Live Radio Play*, *Pirate Schmirate!*, *Rough Crossing*, *Saturday Night Fever*, *Newsies*, *The 39 Steps*, *La Cage Aux Folles* and *Footloose*. His work has also been seen at Cortland Repertory Theatre, Allenberry Playhouse, Penobscot Theatre Company, Downtown Cabaret Theatre, Gateway Playhouse, Theatreworks New Milford, Stamford Center for the Arts, The Emelin Theatre, Tampa's Gorilla Theatre, The Theater Barn and at Off-Broadway's American Theater for Actors. Jimmy is also co-founder and producer of the award-winning Pantochino Productions Inc. in Connecticut.

COLLEEN CALLAHAN (*Properties Designer & Assistant Stage Manager*) is thrilled to be returning to the Legacy Theatre Team! She is a recent graduate of Western Connecticut State University with a degree in Theatre Arts. Her previous work includes Yale Opera's *The Rape of*



Crest Lincoln
applauds the shoreline
and the arts.



CREST LINCOLN
O F W O O D B R I D G E

185 Amity Road, Woodbridge, CT
203-389-7100 www.crestwoodbridge.com

Who's Who

Lucretia (Run Crew), Legacy Theatre's *A Christmas Carol* (Assistant Stage Manager & Wardrobe Assistant), WCSU's *Honey, I Shrank the Plays* (Stage Manager), and WCSU's *Hand To God* (Assistant Costume Designer). Selected performance experience includes WCSU's *Noises Off* (Doty Otley), WCSU's *The Resistible Rise Of Arturo Ui* (Betty Dullfeet), and WCSU's *In the Open* (Devon).

ADAM JACKSON (*Sound Designer*) is thrilled to be a part of Legacy's third season! Adam has worked on over 50 productions as an actor and designer. He has done technical theatre design work for Walsh Intermediate School, the Branford High School Fall Play and Spring Musical, Ivoryton Playhouse, WCSU Opera, and Elm Shakespeare Company. He is also the resident technical supervisor at Shoreline Theatre Company where he particularly enjoys working on the summer camp shows. Adam recently graduated from Western Connecticut State University with a BS in Music Education and a concentration in classical trombone. He runs sound for The River Church in Danbury and occasionally has the pleasure of being invited into theatre classes to speak to students about the joys of technical theatre!

RICH BURKAM (*Master Carpenter*) came to Connecticut to study music and music recording at UNH. He played in bands such as 4:20, Space Cushion, and Over The Line. His studies continued, learning to be a luthier under Barry Lipman and Chris Tatalias, giving him a taste for fine woodworking. Richard now owns a woodshop that makes fine furniture, in a space which is shared with lighting designer Jamie Burnett. Together they have built sets for many production companies, including Elm Shakespeare, Yale Baroque Opera Project, and many small black box theater productions.

SARAH PERO (*Stage Manager*) To read Sarah's bio, please view page 29.

ACTOR'S EQUITY ASSOCIATION (AEA) was founded in 1913, and AEA represents more than 50,000 actors and stage managers in the United States. Equity seeks to advance, promote and foster the art of live theatre as an essential component of our society. Equity negotiates wages and working conditions, providing a wide range of benefits, including health and pension plans. AEA is a member of the AFL-CIO, and is affiliated with FIA, an international organization of performing arts unions. The Equity emblem is our mark of excellence. www.actorsequity.org

SPECIAL THANKS FOR *THE MUSICAL OF MUSICALS (THE MUSICAL!)*

Mary Bloom, Hunter Charnow, June Gold,
Hamden Hall Country Day School,
Pantochino Productions, Dan Sarnelli

Contact Legacy Theatre

Box Office: (203) 315-1901 (Mon-Fri 10am-3pm)

Email: Info@LegacyTheatreCT.org

Website: www.LegacyTheatreCT.org

Gift Certificates available online or through the Box Office.

 facebook.com/LegacyTheatreCT

 [@legacytheatret](https://instagram.com/legacytheatret)

 [@legacytheatret](https://twitter.com/legacytheatret)

**The arts make a bridge
ways that nothing else**



GSB, the Branford Community Foundation, and The Guilford Foundation are proud mainstage season sponsors of the *Legacy Theatre*.

across this world in
can.” – *Julie Andrews*



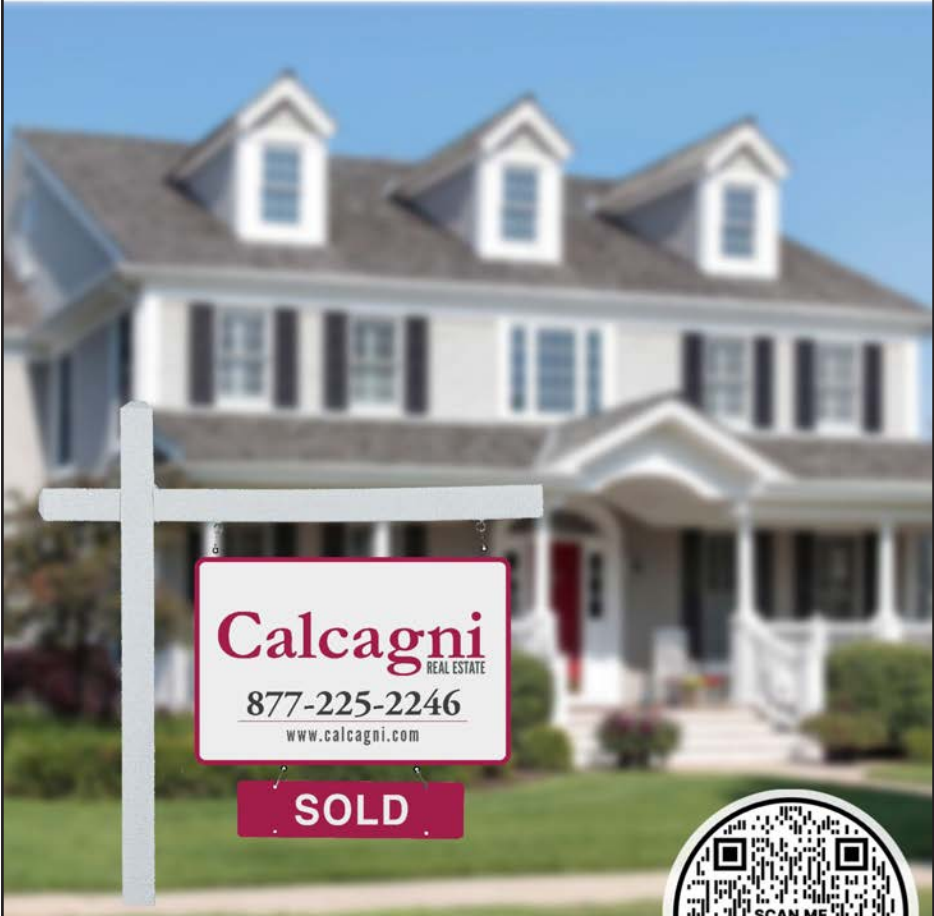
BRANFORD
Community Foundation



Sponsored by the Branford Community Foundation and The Guilford Foundation with funding provided by GSB.

Your home is worth a lot to you.

When you are ready to make a move, don't sell yourself short.



Scan the QR code with your phone's camera to receive a complimentary Equity Analysis of your home.



Calcagni

REAL ESTATE

Selling homes & helping CT's home buyers for over 50 years.

 /CalcagniRealEstate

calcagni.com

 /CalcagniRealEstateCT

Legacy Who's Who

LEGACY THEATRE STAFF

Managing Director	JEFF PROVOST
Artistic Director & Co-Founder	KEELY BAISDEN KNUDSEN
Co-Founder	STEPHANIE STIEFEL WILLIAMS
Business Manager	KIERSTEN BJORK
Production Manager	SARAH PERO
Development Manager	ANNE RUNOLFSSON
Producer of Broadway Concert Series & Community Arts Coordinator	COLIN SHEEHAN
Community Outreach	MARY LEE WEBER
Front of House Manager & COVID Safety Manager	JEFF ZEITLIN
Box Office Manager	NICK FETHERSTON
Front of House Alternates	KIERSTEN BJORK, CHRIS LEMIEUX, KELSEY MULLIGAN, KENNY PELPHREY, NICK FETHERSTON
Graphic Designer	JOE LANDRY
House Photographer	SAMUEL BIBBINS
Interns	JESSICA CLARK, ANDREW DONNELLY, DAVID MCGROARY, GRACE PARISI

STAFF FOR *THE MUSICAL OF MUSICALS (THE MUSICAL!)*

Scenic Artist	DAVID SEPULVEDA
Sound Engineers	JACK MOCKER, NICK COLOMBO
Wardrobe Supervisor	ALAINA DWYER
Run Crew	NATE BLOOM
Dramaturgy Intern	ANDREW DONNELLY

LEGACY THEATRE BOARD OF TRUSTEES

Stephanie Williams, *President*
Jana Shea, *Vice President*
Kathleen Murphy, *Secretary*
Luke Williams, *Treasurer*
Damian Doria
Katina Gionteris
Charles Grady
Brian Knudsen
James Roday Rodriguez
Tom Shea

LEGACY SPECIAL THANKS

Legacy Volunteers, TYCO, The Stony Creek Community, The Bjork Family, Brian W. Knudsen, Nancy Smith, Don Weinbach, Joe Landry, Christensen Landscaping (Lawn Company), Auntie Bella (Cleaning)



LOCALLY OWNED AND OPERATED

Full Service:

- Framing
- Millwork
- Trusses
- Engineered joists
- Engineered beams
- Windows
- Kitchens
- Trim



Our professional sales and service staff work hard to ensure timely deliveries and efficient order production. We want your business!

1.800.445.8623

381 State Street, North Haven, CT

www.nationallumberinc.com



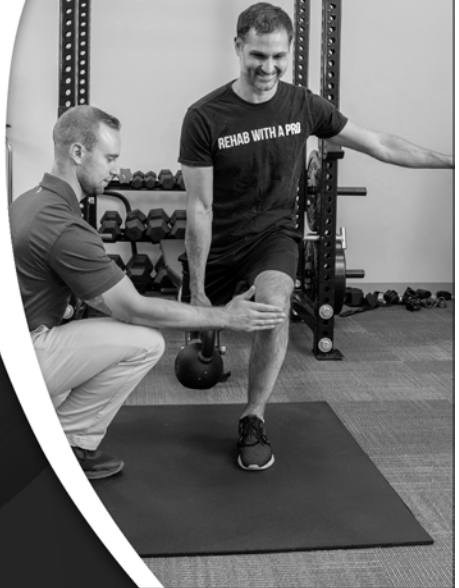
Gaylord
Specialty Healthcare

Physical Therapy

**EXPERTS IN
SPORTS MEDICINE**

Cheshire · Cromwell · Madison
· North Haven · Wallingford

rehabwithapro.org



SUMMER CLASSES

Saturdays, July 22- August 12

TODDLER TIME!

(Preschool)

9:30-10:15 AM

FAIRY TALE MUSICAL

(Grades K-3)

10:30-11:15 AM

Instructor: Chelsea Dacey

Space is Very Limited!

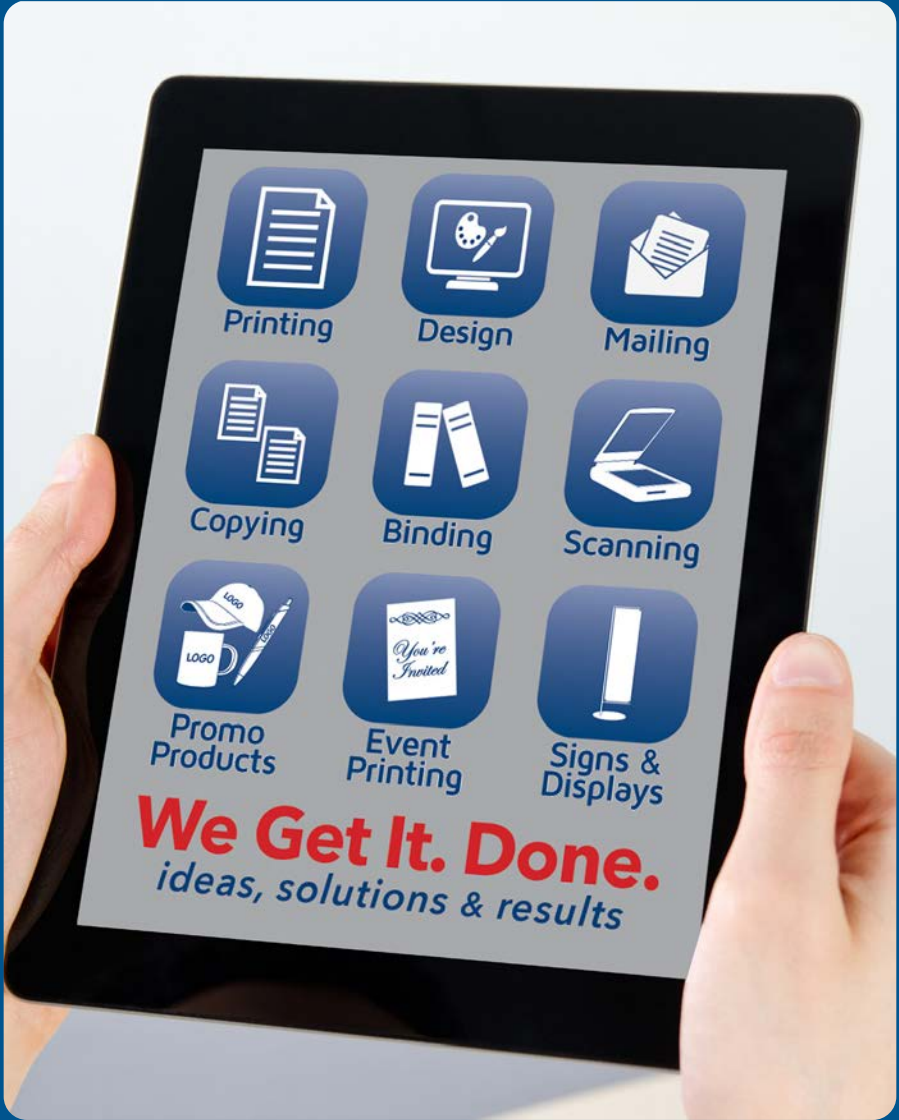
Register today at

LegacyTheatreCT.org/classes



TYCO Print

making *print* happen



New Haven
296 Elm Street • 203.777.TYCO

Online 24/7
www.TycoPrint.com •   

Branford
618 Main Street • 203.481.TYCO

Legacy Who's Who



JEFF PROVOST (*Managing Director*) was a Founding Advisory Committee member of the Fairfield Theatre Company (FTC), eventually becoming their first Managing Director while successfully leading their "FTC Moves Downtown" capital campaign. He

was the first Director of Marketing & Public Relations at Westport Country Playhouse during Joanne Woodward's earliest seasons as Artistic Director and held the same title at Hartford Stage during Michael Wilson's new artistic leadership. He created and managed the subscription-driven Family Broadway Series at the "new" Oakdale Theater, during the time that they became the largest theatre in New England. Jeff held management positions at the Williamstown Theatre Festival and Yale Repertory Theatre, as well as Off-Broadway and on, with the 1994 Tony-award-winning production of *Medea*, featuring Dame Diana Rigg. As an arts marketing consultant, Provost was invited to be a guest lecturer/presenter for the Connecticut Commission on the Arts.

After holding management positions in the non-profit arts and commercial entertainment industries, Provost joined Red 7 Media in Norwalk where he helped launch the Event Marketing Institute. He founded PRO Management LLC in 2015 where he worked with a wide variety of clients including the Experiential Designers & Producers Association, the Healing NET Foundation, and McDonald's.

He completed his undergraduate degree at The Catholic University of America in Washington DC., followed by graduate work at Yale University, where he earned his master's degree in Theatre Management. When not enjoying his lifelong passion for live theatre, Provost volunteers his time with the Make-A-Wish Foundation's CT Chapter where he performs magic under the stage name of "Mr. Jeffo". Jeff and his wife Traci are happy to have recently become Branford residents, and they look forward to getting to know the area and being a part of the shoreline community this summer.



KEELY BAISDEN KNUDSEN (*Artistic Director & Co-Founder*) is thrilled to be reuniting with Stephanie and Karl on the Legacy stage, as this trio performed up and down the northeast for decades with Karl's Cornerstone Productions! On these boards you have seen Keely performing in *A Christmas Carol*, *Peter and Wendy* and *Joan Joyce* (and was a writer/director on each of those). A co-founder of Legacy Theatre with Stephanie, Keely has directed dozens of shows since its inception eleven years ago and is looking forward to directing the upcoming *Beauty and the Beast* and *The Play*

That Goes Wrong this season. You will find her performing on stage again at the Seven Angels Theatre this October reprising the role of *Joan Joyce*, which is hoping to transfer Off-Broadway next year. An award-winning director, Keely has performed, directed, and choreographed internationally in plays, musicals, operas, and dance companies in hundreds of theatrical productions and has performed in 48 of the United States and in the UK.

Realizing her vision of a new theatre company on the Connecticut Shoreline, Keely's ideals of inspiring, inclusive work that uplifts the human spirit and connects communities formalized in the creation of the Legacy Theatre with Co-Founder Stephanie Stiefel Williams, a performing colleague and dear friend. Keely has directed, choreographed, and taught a myriad of performing arts courses at such institutions as Quinnipiac University, Yale University, Fairfield University, Hartt School of Drama, Southern Connecticut State University, Westminster College, and was the Director of Education of New Haven's acclaimed Elm Shakespeare Company for several years. Additionally a composer/lyricist and playwright, she is a member of ASCAP and a writer/curator for Rewls Productions (www.rewlsproductions.us).

Her directing has been heralded by the *Arts Paper* as "...visually striking, emotionally moving" and "captivating" and of her direction of *Hamlet* it was said, "Knudsen has made the notoriously difficult Shakespearean language accessible." Her creation of the Wheel Life Theatre Troupe (as part of the Legacy Theatre) has been an especially rewarding program as she acts and directs with those who ambulate with crutches and wheelchairs. Her BFA is from New York University's Tisch School of the Arts, at which she graduated first in her class, and she received her Masters Degree in Drama on full scholarship from The Royal Scottish Academy of Music and Drama in Glasgow. Keely, her husband Brian, and five children (Saviah, Liviana, Wynter, Emery, and Reeves) reside in Guilford, CT.



STEPHANIE STIEFEL WILLIAMS (*Co-Founder & Chairperson of the Board*) is an active and versatile performer in musicals, concerts, and plays who has appeared professionally in a variety of productions at venues such as Broadway's Marriott Marquis, Hartford

Stage Company, Foxwoods' Fox Theatre, Atlantic City's Tropicana, Turning Stone Casino, and the Garde Arts Center. Among her favorites are leading roles in *Man of La Mancha*, *West Side Story*, *Damn Yankees*, *The Sound of Music*, and *Camelot*. Although her professional focus has been in musical theatre, she also has been engaged frequently as a concert soloist, as well as an a cappella ensemble singer. Last season, Stephanie starred in *I Do! I Do!* at The Legacy Theatre, where she is a proud co-

INCREASE YOUR EMPLOYABILITY WITH



ALBERTUS

CAREER **eX**CELERATOR

Google  Meta  IBM  INTUIT  SAS



Albertus graduates are even more marketable in a highly competitive job market.

We've curated a list of stackable micro-credential and certificate programs in high-demand fields to complement skillsets and bridge the gap between knowledge and experience.... preparing you for career success.

Career eXcelerator is available to full-time Albertus students at *no additional cost*. They are self-paced, short-term, fully online, and taught by industry experts from corporations such as Google, IBM, Intuit, Meta, Salesforce, SAP, and Tally in a wide array of programs ranging from Google Data Analytics and Meta Social Media Marketing to Salesforce Sales Operations and Tally Bookkeeping.

**The value of an Albertus education just got stronger.
Level up and rise to the top of the applicant pool with
Albertus Career eXcelerator.**



ALBERTUS MAGNUS COLLEGE

We have faith in your future.

700 Prospect Street, New Haven • albertus.edu/excelerator

Legacy Who's Who

founder, repertory member, and trustee president. In addition to her recent work with Legacy, Stephanie is a member of the Performing Arts Advisory Council at the University of Notre Dame in South Bend, Indiana. She has become involved on a producing level with productions of *Gypsy* and *Showboat* in London's West End, the 2017 off-Broadway revival of *Sweeney Todd*, and Broadway's *Sea Wall/A Life, Escape to Margaritaville*, and *Trip of Love*. As a former Miss Connecticut, she represented our state at the Miss America Pageant in Atlantic City. She holds a Bachelor of Arts, magna cum laude, from Fairfield University and a Juris Doctorate with honors from the University of Connecticut School of Law. She is a proud mother of two fabulous young adults and lives in Guilford with her wonderful husband, Luke.



KIERSTEN BJORK (*Business Manager*) worked as the Theatre Manager at Legacy for the past two years and is excited to be a part of this third season! She is a 2021 graduate of Fairfield University, graduating summa cum laude and Phi Beta Kappa with degrees in Theatre and English. In addition to her work with Legacy, Kiersten does freelance theatre work as a stage manager, technician, and carpenter for the Quick Center for the Arts and Theatre Fairfield. She is also a Theatre Critic with the Connecticut Critics Circle, and a Book Reviewer for Booktrib.

Kiersten is also a performer, having worked with companies such as Legacy Theatre, Shoreline Theatre Company, Theatre Fairfield, and more. Favorite performing credits include *Footloose* (Ethel McCormack), *The Spitfire Grill* (Percy), *[Title of show]* (Susan – BroadwayWorld Award Nomination: Best Performer in a Streaming Musical), *Joan Joyce* (Young Joan Joyce – BroadwayWorld Award Nomination: Best Performer in a Musical), *Chicago* (Junel/Squish*), *A Christmas Carol* (Fan/Mrs. Fezziwig/Others), *Woman and Scarecrow* (Auntie Ah – BroadwayWorld Award Nomination: Best Performer in a Streaming Play), *Titus Andronicus* (Demetrius), *A Princess Tea* (Evil Queen), *Fortinbras* (Laertes), *Authenticity* (Alice), and *The Tales of Christopher Robin & Winnie-the-Pooh* (Rabbit). Kiersten's credits also include director, scenic designer, master carpenter, lighting board operator, electrician, stage manager, assistant stage manager, and run crew on numerous productions, with favorites being *Rabbit Hole* (Scenic Designer), *The Curious Incident of the Dog in the Nighttime* (Master Carpenter), and *I Do! I Do!* and *The Last Five Years* (Assistant Stage Manager).



SARAH PERO (*Production Manager*) Born and raised in New Haven, CT, Sarah has been involved with local community and professional theatre for 20+ years. Acting at the age of 10, and directing at 16, Sarah received her

BFA in Theatre, with a concentration in directing from the University of Rhode Island. Right after college, Sarah was a part-time drama teacher in New Haven Public Schools and also taught theatre classes with Performing Arts Programs (South Windsor, CT). Sarah then worked at the Music Theatre of CT (Norwalk, CT) School of Performing Arts, wearing many hats as Administrative Manager, Teaching Artist, Director, Music Director, and Choreographer for the school. Sarah also managed the Box Office and was the Resident Sound Designer for MTC's Professional Main Stage. Following MTC, Sarah worked as Administrative Manager at the Downtown Cabaret Theatre (Bridgeport, CT). As a Production Stage Manager for various Theatre Productions in Rhode Island and Connecticut, some of her favorites include: *Tick, Tick Boom!*; *Little Women: The Musical*; and *You're a Good Man Charlie Brown*. Most recently, Sarah served as the Production Stage Manager for multiple Legacy productions in the 2021, 2022, and 2023 seasons. Sarah is thrilled to officially join the Legacy team as Production Manager.



ANNE RUNOLFSSON (*Development Manager*) has entertained audiences worldwide for the past 35 years. A veteran of the stage and concert venues, her Broadway and National tour appearances include: *Phantom of the Opera* (Carlotta), *Victor/Victoria* (Stand-by for Julie Andrews and Liza Minnelli), *Les Misérables* (Fantine), *Cyranos*: *The Musical* (Roxane), *The Secret Garden* (Lil), *Aspects of Love*, and *James Joyce's The Dead* (Gretta). As a soloist, Anne has performed at such iconic venues as The Hollywood Bowl, Carnegie Hall, Radio City Music Hall (with tenor Jose Carreras), The O2 Arena (London, with Julie Andrews), The Concertgebouw (Amsterdam), The Kennedy Center, Wolf Trap and countless others. Anne was awarded New York City's prestigious MAC award for Best Female Singer. Her cabaret appearances include *Birdland*, *54 Below*, *The Green Room 42*, *92nd Street Y*, *The Russian Tea Room*, *Rainbow and Stars*, and *Hollywood's Cinegrill and Gardenia*. Show recordings include: *Les Misérables International Cast*, *Listen to My Heart*, and *You Oughta Be On Broadway*, and a solo album "At Sea." Anne co-wrote and performs in two shows with singer/actress daughter Tess Adams; *The Story Goes On: A Broadway Family Journey* and *Heroine's Song*. Anne made her directorial debut in December 2021 in Los Angeles with *My Unauthorized Hallmark Movie Musical*. She has also appeared on NBC's *The Blacklist*. Anne is principal partner of Runolfsson Entertainment which includes "Sing With Anne," a vocal coaching practice. She has taught voice and performance at the Orange County School for the Arts in California and New York University.



AT&T

Legacy Who's Who



COLIN SHEEHAN (*Producer of Broadway Concert Series & Community Arts Coordinator*) is a local arts enthusiast and serves as the Arts, Culture & Special Events Coordinator for the Town of Branford, Director of The Branford High School Performing Arts' Spring Musical, and Co-Founder and Co-Artistic Director of Branford Parks and Recreation Shoreline Theatre Company. He graduated from Branford High School and continued his studies at Wagner College with a B.A. in Theatre and Speech Performance. In 2003, he made his Broadway debut in the closing night production of *Les Misérables*. In '99, Colin appeared numerous times on *The Rosie O'Donnell Show* and worked for three seasons on *The Wendy Williams Show*. Colin has produced, directed, hosted, and performed in the tri-state area and abroad with Broadway Cruises, Nickelodeon Cruises, and R Family Vacations Cruises. Colin is a philanthropist and has hosted, produced and raised funds and awareness for many organizations in Branford and beyond.



MARY LEE WEBER (*Community Outreach*) is a Marketing and Communications consultant who has lived in Branford since 1988. She held the position of Director of Marketing and Community Development for the ABC affiliate WTNH-8 for 17 years where she was responsible for non-traditional revenue and community partnerships. With a local creative team she Executive Produced a short documentary for the Stony Creek Museum called *Born at The Water's Edge*. It features interviews and information about the Thimble Islands and the history of Stony Creek including brief segments about Legacy Theatre, the Stony Creek Fife and Drum Corps and the Quarry. Mary Lee also helped with the Legacy Theatre productions while they were in residence at the Stony Creek Museum in 2018-19. She joined Legacy to help with Marketing and Community Outreach and is thrilled to play even a small part in helping Legacy bring theatre back to Stony Creek.



JEFF ZEITLIN (*Front of House Manager*) A long-time resident of Guilford, CT, Jeff's love of theatre was taken to the next level when his daughter was a part of the Guilford High School Theatre Arts program. Jeff served as a Board Member of the school's Theatre Arts

Parents Support. He then became the Box Office Manager and Front of House Advisor for GHSTA. He continues in that volunteer role today. Along with his wife, Alyson, he was an usher at The Ivoryton Playhouse. Most recently, he was a House Manager at The Katherine Hepburn Cultural

Arts Center ("The Kate") in Old Saybrook. He first became aware of The Legacy Theatre when attending a couple of fundraisers a few years ago. He was taken by the plans for the historic building and the prospect of bringing high quality Broadway productions and performers to the shoreline. Jeff's community involvement also extends to Guilford A Better Chance where he is a member of the Board of Directors. When not at the theatre, Jeff is Loyalty Manager for IKEA in New Haven, focusing on Public and Community Relations. Jeff looks forward to welcoming theatre-goers from near and far to The Legacy Theatre!



NICK FETHERSTON (*Box Office Manager*) is an actor operating out of the New Haven area. He is a graduate of Quinnipiac University with a degree in Theater Studies and is also an alumnus of The National Theater Institute at the Eugene O'Neill Theater Center.

Previous Legacy Theatre acting credits include Lysander in *A Midsummer Night's Dream*, Rosencrantz in *Hamlet*, and a brief cameo as The Prince in this year's *A Princess Tea*. Other notable credits include Don John/The Sexton in *Much Ado About Nothing* (Capital Classics), various roles in *The 2019 New Play Festival* (The Barrow Group NYC), Albert in *Goldfish* (New Haven Theater Company), and Mr. Bingley in *Pride and Prejudice* (The Little Theatre of Manchester). Nick is also the Box Office Manager here at The Legacy Theatre (he might've sold you a ticket to this very show). He is also an instructor for a variety of acting classes that Legacy provides. He thanks you for supporting his work and hopes you enjoy the show! Website: nickfetherston.com Instagram: [@nfetherstonblue](https://www.instagram.com/nfetherstonblue)



JOE LANDRY (*Graphic Designer*) has had the pleasure of being part of the Legacy family for the past number of years. He has designed for several theatres, including MTC, Westport Country Playhouse, Fairfield Theatre Company and Pantochino Productions.

As a playwright, his plays have been produced throughout the world, including right here at Legacy, where his adaptation of *The Great Gatsby: A Live Radio Play* was staged last season. www.joelandry.com



stony creek market

breakfast & lunch
open daily year round

stony creek pizza

evenings *seasonal hours*

178 thimble island rd • stony creek • branford

203-488-0145

www.stonycreekmarket.com



WYETH
ARCHITECTS

WyethArchitects.com
Architects ^{of the} Legacy Theatre

Guitars
Mandolins

Acoustic
Music
.Org[®]

1250 Boston Post Road
Guilford, CT
(203) 458-8353

Support Legacy Theatre

As a 501(c)3 nonprofit organization, Legacy Theatre relies on the generosity of our donors and supporters to bring performances, classes, job opportunities and more to the shoreline community. Please consider making a tax-deductible donation today, or supporting us through other avenues. Please contact Kiersten Bjork, Buisness Manager, at kiersten@legacytheatrect.org with any questions.



NAMING OPPORTUNITIES

Leave your Legacy in this historic, fully restored, state-of-the-art, gorgeous theatre. Naming Opportunities are still available for seats and more.



DEDICATE A PERFORMANCE

Honor someone special in your life by dedicating a performance at Legacy Theatre. Dedicating a performance is truly a unique way to commemorate a birthday, anniversary, or achievement. (Please Note: Tickets are not included in this Dedicate a Performance Program.)



DONATE

Visit www.legacytheatrect.org/donate

Scan to learn more and to partner with us!

Legacy Theatre is a tax-exempt, 501(c)(3) organization and donations are tax-deductible to the fullest extent allowed by law.

Follow Legacy on social media for behind-the-scenes photos, interviews, exclusive offers and more!

 [facebook.com/LegacyTheatreCT](https://www.facebook.com/LegacyTheatreCT)

 [@legacytheatrect](https://www.instagram.com/@legacytheatrect)

 [@legacytheatrect](https://www.twitter.com/@legacytheatrect)

LEGACY THEATRE
ANNUAL
GIVING
SOCIETY

Will you be a spark?

Will you join a select group of arts lovers and become a member of the Legacy Theatre's Annual Giving Society?

Your gift of \$1000 or more will place you in a group of like-minded folks who are committed to sustaining a vital part of our humanity.

Your generosity will provide the operating and programmatic funding needed for our theatre to thrive.

And right now, your love for theatre can shine twice as brightly.

An extremely generous donor, who wishes to remain anonymous, has agreed to match every gift of \$1000 or more, up to \$250,000 through August 31, 2023.

Will you join us and light a creative spark to share with our community?

Visit the Box Office, Call (203) 315-1901,
Give Online at LegacyTheatreCT.org, or
Scan the Code on this Page.



Thank You!

Legacy Theatre Donors

Legacy Theatre is grateful to the many contributors whose generous gifts provide vital resources for our performances, artists, and services.

THE ANNUAL GIVING SOCIETY

FOUNDER \$25,000 and above	PRODUCER \$10,000-\$25,000	DIRECTOR \$5,000-\$9,999	ACTOR \$2,500-\$4,999
The Martyn Foundation Luke and Stephanie Williams	Atlas Healthcare	Burry Fredrik Foundation Mr. & Mrs. Ted Kennedy Mr. Earl Tucker	Madelyn Cerritelli Chris Ulbrich
	ARTS PATRON \$1,000-\$2,499		
Kenneth Allen and Lynn Manizza Allied Printing Services Todd Depasquale George Eliades Mr. and Mrs. Ted Ells Betty Foster	Todd Harthan Matthew Holbrook Bill Horne and Roberta Brilmayer Jeffrey Hoffman Patricia Jacobson Jeffrey Allen Johnson		Mosaic Marketing Marcia Rock Mr. and Mrs. Patrick Ruwe David Wildstein

BENEFACTORS

Navaraj Ahuja Suzanne Alderman Christopher Anatra Emilee Apuzzo Robert Babcock Kate Baker Sharon Barnabei David Beckerman Susan Bender Alfred Bertoline Christine & Ken Bjork Kiersten Bjork Carmel Blakeman Katy Bloss Elise Bohner Maryann Bracken Maria Brandriff Linda Breslin Jennifer Bright Lauren Brown and Victor Burga Michele Burgess Berclee Cameron Marc Camille Helene Cardilicchia Toni Cartisano Ellen Carucci Christine Charbonneau Lia Collings Sharon Collins Tiffany Conway CORT Business Services Lisa Courtney Lynn Coville Stirling Craig Susan Crockford-Peters Patrick and Anne Cunningham	Chelsea Dacey Kelly Dacey Elizabeth Dahill James Demonaco Matthew Detmer Anonymous Donor Lawrence Dowler Donna Doyle Edward Dubendorf Rosellen East Karen Erickson Margaret Everson Daniel F Gilmore Gwendolyn Fetherston Rayzl Feuer Mary Fitzgerald Julie Fitzpatrick Chris Flanagan Phyllis Fraenza-West Mary Frank Judy Friend Mark Gahm Brendan Gaul Shelley Geballe Gordon Geballe Christine Gesino Alison Gillotti Linda Giordano Matthew Glass Elaine Gluck Noah Golden Rebecca Goodheart Robert Grande Lee Greenwood Amy Griffin Diane Guarino Ana Gupte John Hamby	Peter Hawes Caroline Henningsen Barbara Hentschel Pamela Hetherington Jimmy Hilliard Francis Hird Daniela Hochreiter Alan Horwitz Laura Jacobs Eliot Jameson Don Julian Donna K Doherty Sharon Kelting Shana Kemp Michele Kendrioski Jeanne Kinnard Geraldyn Kinney Linda Klein Brian Knudsen Jane Kolodgy Joan Krochmal Susan Kulp John Lamirande Bonnie Landon Joe Landry Mary Laske Phylliss Lawlor Lauren Lepene Christopher Libenson Noah Liberman Elizabeth Lofquist Sarah Lopez Jim Love Richard Lynch Brenda MacDonald Patricia Maccolino Robert Marra Christina Mason	Elissa Mastrangelo Frederick Mayer Edward McCarver Andrew McKirdy Patricia Mezzi Naomi Mitchell Joan Mohr Douglas Moser Susan Mulcahey David Newton Dantram Nguyen Marcella Nunez Smith Charlotte Ochs Roy Ogren Todd Pajonas Peter Palumbo Charlotte Parker Carole Anne Pepe Sarah Pero Jeff Pickett Joanne Pintek Ryan Pliner Kelly Powell Trevor Provost Traci Provost Jeffrey Quiala Todd Renz Gerrit Ritt Ron Robinson Michael Rocha Marcia Rock David Rock Daniel Rock Cathyaan Roding Joan Rodriguez Anne Runolfsson Dominic Savo Stephanie Schechter	Stewart Schenck Emily Scholnick Paul Serenbetz Charles Sherwood Joe Siart III Catherine Siegel Jayme Sifling Scott Simonelli Laura Sinise Kathy Slubowski Harold Spitzer Neil Srivastava John Stiefel Shepard Stone Sylvia Storey Amanda Ann Swanton Anne Tarpey Flanders Jacqueline Torcellini Earl Tucker Jr Mary Ann Villano Molly Visnic Claudia Volano Susan Wallace Burke Wallace Holly Warner Mary Lee Weber Jeffrey Weber Laurence Weller Randolph West Laura Whaley Stephanie Williams Luke Williams Jack Wolfenden Leonard Wyeth Jeff Zeitlin Andrzej Zinchuk Melissa Zulawski
--	---	---	---	--

Anderson Krause

INSURANCE

**We Keep Our Family Tradition
So You Can Keep Yours**

**Personal & Business
Insurance**



Morgan M. Krause CISR, CIC
morgan@andersonkrause.com



Michael A. Krause CIC
mkrause@andersonkrause.com

203.488.6386 | AndersonKrause.com
238 East Main Street, Branford, CT

Legacy Theatre Donors

GRANTS

CT Dept of Economic & Community
Development Office of the Arts
Guilford Community Foundation

CT Dept of Economic & Community
Development Office of the Arts
Eversource

Community Foundation of Greater
New Haven

2023 SEASON SPONSORS

As of July 6, 2023

Legacy Theatre gratefully acknowledges support from our Corporate and Foundation Supporters

<p>MAINSTAGE SEASON</p>  <p>BRANFORD COMMUNITY FOUNDATION & GUILFORD SAVINGS BANK</p>		<p>MASTERS OF PUPPETS THE BURRY FREDRIK FOUNDATION</p>  <p>THE GUILFORD FOUNDATION & GUILFORD SAVINGS BANK</p>		<p>BEAUTY AND THE BEAST</p> <p>THE MARTYN FOUNDATION</p> 	
<p>THE PLAY THAT GOES WRONG</p> 		<p>SUNDAY BROADWAY CONCERT SERIES</p> <p>JANA AND TOM SHEA</p>  			
<p>MACK IS BACK! THE MUSIC OF BOBBY DARIN AND MORE!</p>   				<p>FAMILY SERIES</p> 	

COMMUNITY SPONSORS



*Support has been provided to Legacy Theatre
from the Connecticut Arts Endowment Fund and CT Humanities (CTH),
with funding provided by the Connecticut State Department of Economic and Community
Development/Connecticut Office of the Arts (COA) from the Connecticut State Legislature.*

Become a 2023 Sponsor!

Please consider including Legacy Theatre in your 2023 marketing efforts.
We have sponsorship opportunities for every budget!
Scan to learn more



A round of applause, please!

A Legacy Theatre Standing Ovation
to our wonderful behind-the-scenes Guild Members,
Susan Barnes, Lisa Courtney, Tina Ells, Katina Gionteris, and Kristie Shanahan.

JOIN THE GUILD!



Legacy Theatre company members join Tony Award-winning actress/singer Nikki M. James onstage after her concert, 2/26/23. Photo by Samuel Bibbins.

- The Legacy Theatre Guild is comprised of dedicated members of the Shoreline East community who come together as a group to support the work and mission of the Legacy Theatre in Stony Creek, CT.
- These “cheerleaders for the performing arts and the creative process” freely give their time and talents to help the full and part-time staff at the Legacy with self-contained service projects; beautifying or updating a neglected or dated area within our actor housing, assembling printed materials for a bulk mailing campaign, helping to prepare or serve cast and company dinners or summer cookouts, etc.
- Active members quickly become part of the Legacy family, gathering when called upon to help in the true spirit of giving. A veritable and enthusiastic “theatre club of volunteers,” Legacy Guild members can soon become the backbone of the not-for-profit arts organization.

For more information
Contact Managing Director, Jeff Provost
JProvost@LegacyTheatreCT.org

Valpak is proud to support
The Legacy Theater



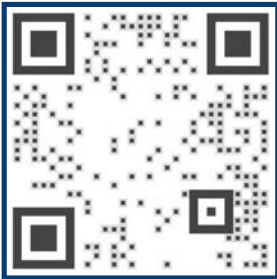
What can Valpak do for your business?

Contact us and let's get started building your campaign today!

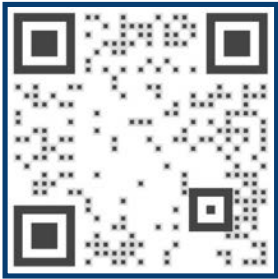
Mark Barillaro
mark_barillaro@valpak.com
860.552.8109

Save more at Valpak.com!

SCAN FOR VALPAK APP



SCAN FOR MORE INFO



COMING SOON



August 10-27



Disney
**BEAUTY
AND THE
BEAST**

THE BROADWAY MUSICAL

© Disney

September 14 - October 1

**THE PLAY
THAT GOES
WRONG**

The Holiday Tradition Returns! November 29 - December 10



Visit LegacyTheatreCT.org or Call (203) 315-1901
THE LEGACY THEATRE 128 Thimble Islands Road, Branford, CT