

THE LEGACY THEATRE  
2023 SEASON



**WRONG**  
**THE PLAY THAT GOES**



Marcum is thrilled to support

# THE LEGACY THEATRE



**MARCUM**  
ACCOUNTANTS ▲ ADVISORS

[marcumllp.com](http://marcumllp.com)

.....

# WE SUPPORT THE ARTS

AT THE LEGACY THEATRE

.....

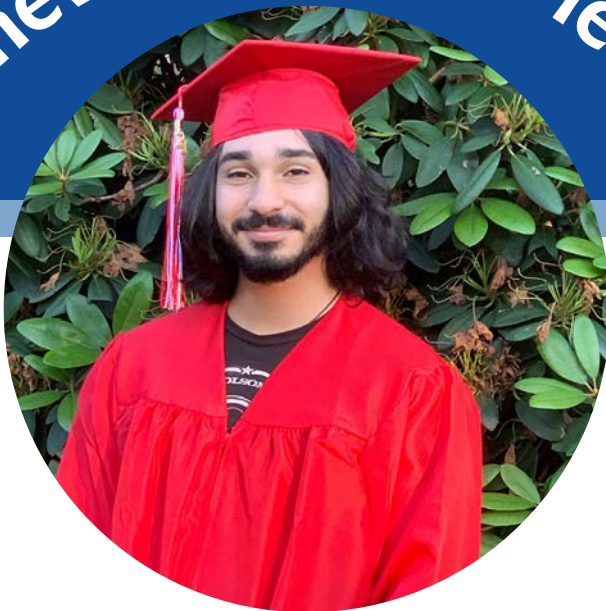


**iHeart**MEDIA

CONNECTICUT



It's never too late to learn!



## FREE ACADEMIC CLASSES

High School Diploma / GED®

English for Speakers of Other Languages

U.S. Citizenship Preparation

## AFFORDABLE ENRICHMENT CLASSES

Computers | Arts & Crafts | Cooking | Retirement Planning

| Health & Wellness | Music & Dance | Mind & Spirit |

World Languages | Classes for Kids & Families

*Shoreline*

ADULT EDUCATION

(203) 488-5693



SCAN ME!

SHORELINEADULTED.ORG

# Letter from the Artistic Director



Keely Baisden Knudsen

Greetings, fellow theatre-goers!

Although it has been a feat of incomparable hilarity amidst a cacophony of outlandish stage directions to assist the performers to opening day, it is my grand pleasure to forego my typical Letter from the Artistic Director to allow the infamous Cornley Drama Society's faux director, Chris Bean, a few words....

“As newly appointed head of the Cornley Drama Society, I would like to take this opportunity to personally welcome you to what I am sure will be the highlight of the theatre season. Over the past 3 months we have read countless scripts to find just the right play to present this year, and we believe *The Murder at Haversham Manor* will be just the right fit to add some excitement to your very common lives. Our stellar cast, lead by myself, have been in rehearsals for the past few weeks and are sufficiently prepared to raise your standard of theatre viewing to new heights. SO please sit back, relax, and prepare yourself for an evening of exceptional theatre like none you have ever seen before.”

Jointly and with great appreciation,


Keely Baisden Knudsen,  
*Artistic Director of Legacy Theatre*  
and the ephemeral “Chris Bean”



Chris Bean

## Welcome to Legacy!

Follow Legacy on social media!

 [facebook.com/LegacyTheatreCT](https://facebook.com/LegacyTheatreCT)

 [@legacytheatrect](https://instagram.com/@legacytheatrect)

 [@legacytheatrect](https://twitter.com/@legacytheatrect)

Legacy Wi-Fi

Network: LTC GUEST  
Password: GestWiFi!

*Gift Certificates and Merchandise are Available at the Box Office!*

# At This Theatre



c. 1890s



c. 1930s



c. 1930-1940s

- 1866 A small, non-denominational church was built at 128 Thimble Islands Road in the village of Stony Creek in Branford.
- 1900 A fire damaged the property.
- 1914 The land is sold to William Howd and the foundations were laid for a silent movie theater called Idle Hour Moving Pictures.
- 1923 A theater group belonging to the Stony Creek Church of Christ called the Parish Players was forming.
- 1928 The Parish Players purchased the movie theater space, and repurposed it to “live” theater for the first time. Productions included the world premiere of *Death Takes a Holiday* as well as *Private Lives*, *Merrily We Roll Along* and *Pygmalion*.
- 1938 Orson Welles wrote and directed a silent film to accompany his direction of William Gillette’s 1894 comedy *Too Much Johnson* at what was now the Stony Creek Theatre.
- 1946 The theater building became home to Panix/Materna-Line, Inc., a designer and manufacturer of corsets and the like.



Stony Creek Theatre production of *Too Much Johnson* (1938)

# At This Theatre



1946



c. 1980s - 2010s



2021

1961 Grace Weil established the space as the Stony Creek Puppet Museum with life-sized Sicilian puppets direct from performances in Italy. Grace Weil's son, Jim, and Italian Salvatore Macri, were the next to put their mark on the theater. With their rare and cherished skills of puppetry, the Italian puppets came to life.

1970s-2010s Classes and theater were in abundance under Jim Weil, Barry Fritz, the Alliance Theatre, Joe Davis and others. Passing on the legacy of theatre to others is a stronghold of the Legacy Theatre, which purchased this theater in 2013--and now you are part of its ongoing Legacy.

2021 Legacy Theatre, a repertory company with a conservatory arm, opened the restored theatre for performance and training. From nothing but a dream and a vision to now teams of committees, boards of directors and advisors, actors and teachers, this shoreline gem has been restored and revitalized. We at Legacy invite you to continue with us as we commemorate the past and spotlight the future of this special stage.



Jim Weil  
(1960s-1970s)

Explore more about  
**AT THIS THEATRE**  
on the Legacy website!

*Photos, video and more!*

Scan This  
QR Code:



Or visit  
[LegacyTheatreCT.org/history](https://LegacyTheatreCT.org/history)

wshu | Public Radio

“Love the  
classical music ...  
and NPR ... and local  
news coverage.”

William & Susan, Wilton, CT

think. learn. share.

[wshu.org](http://wshu.org)





# THE LEGACY THEATRE

JEFF PROVOST  
*Managing Director*

KEELY BASIDEN KNUDSEN  
*Artistic Director*

presents

# THE PLAY THAT GOES WRONG

By HENRY LEWIS, HENRY SHIELDS, & JONATHAN SAYER

with

THOMAS BEEBE COLLEEN CALLAHAN EMMETT CASSIDY  
NICK FETHERSTON DAN FRYE JIMMY JOHANSMEYER  
ISAAC KUEBER CHRIS LEMIEUX\* MARY MANNIX MARIAH SAGE\*

Master Carpenter RICH BURKAM  
Properties Designer COLLEEN CALLAHAN  
Sound Designer ADAM JACKSON  
Scenic & Lighting Designer JAMIE BURNETT  
Costume Designer ELIZABETH BOLSTER  
Assistant Stage Manager GILLIAN LEBLANC  
Production Stage Manager SARAH PERO  
Fight/Stunt Choreographer EMMETT CASSIDY

Director  
KEELY BASIDEN KNUDSEN

September 14 - October 1, 2023, The Legacy Theatre, Branford, CT

Generously Sponsored by



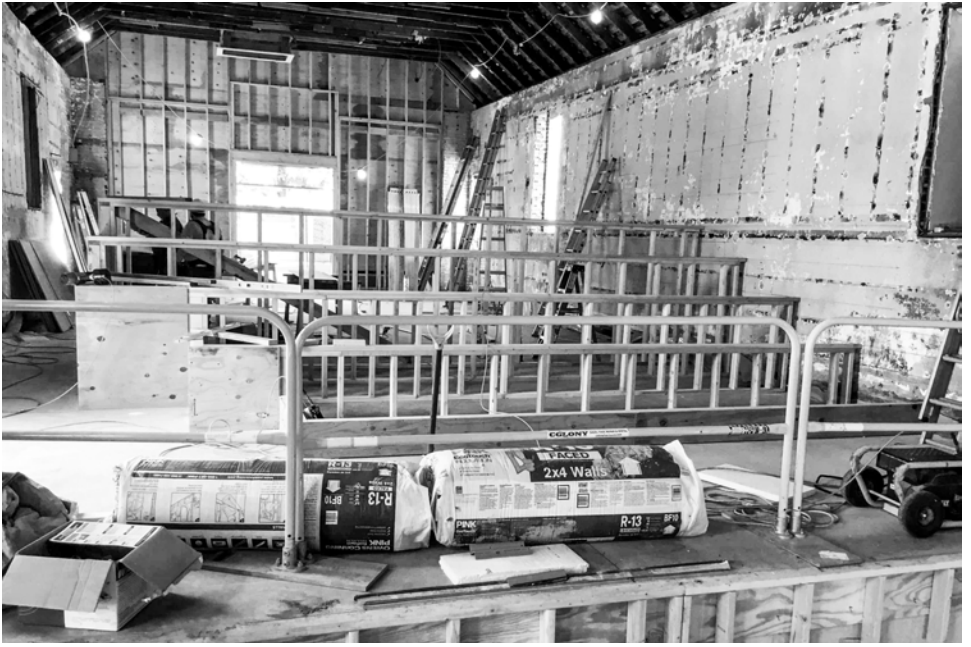
BRANFORD  
Community Foundation



THE PLAY THAT GOES WRONG is presented by arrangement with Dramatists Play Service under license from Mischief Worldwide Ltd.



\* The Actor appears through the courtesy of Actors' Equity Association, the Union of Professional Actors and Stage Managers in the United States.



# WE ARE PROUD TO SUPPORT THE LEGACY THEATRE 2023 SEASON

2 Summit Place, Branford, CT 06405 • 203.643.1000 • [www.oralconstruction.com](http://www.oralconstruction.com)



# Cast

Cast in alphabetical order by Actor

Dennis .....	THOMAS BEEBE
Jonathan .....	NICK FETHERSTON
Trevor .....	DAN FRYE
Chris .....	JIMMY JOHANSMEYER
Max .....	ISAAC KUEBER
Robert .....	CHRIS LEMIEUX*
Sandra .....	MARY MANNIX
Annie .....	MARIAH SAGE*

Swings: COLLEEN CALLAHAN & EMMETT CASSIDY

\* The Actor appears through the courtesy of Actors' Equity Association, the Union of Professional Actors and Stage Managers in the United States.

# Scene

LOCATION: Cornley.

And if you are unfamiliar with where we are, Cornley is in the county of Nottinghamshire, in England.  
It sits in the constituency of Bassetlaw and its latitude and longitude is: 53.455033 -0.878031.

TIME: Right now.... Right... NOW!

APPROXIMATE RUNNING TIME: It should be a pithy length,  
however as seeing the theatrical elements and necessary actors oftentimes become compromised,  
it is much more likely a stretched two hours with a 15-minute (much needed) intermission.

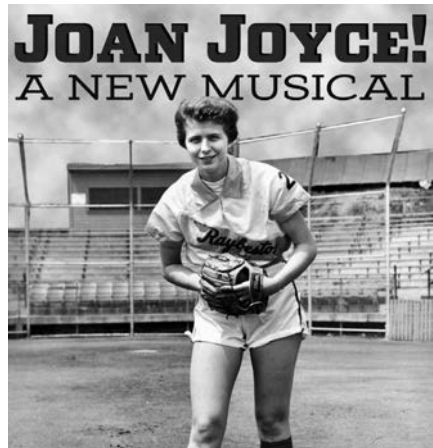


**Did you miss this uplifting  
musical about “the greatest  
female athlete of all time”  
at Legacy Theatre?**

**Get tickets to see it at  
Seven Angels Theatre  
in Waterbury, CT!**

Based on the Book *Connecticut Softball  
Legend Joan Joyce* by Tony Renzoni

Book and Lyrics by Keely Knudsen and  
Lauren Salatto-Rosenay



**OCTOBER 5–22**

Music by Brad Ross

Additional Songs by Keely Knudsen,  
Lauren Salatto-Rosenay, Matthew Harrison  
and David Bell

**Tickets & Info: [SevenAngelsTheatre.org](http://SevenAngelsTheatre.org)**



## We know you're safeguarding **more than just your assets.**

**We can help you preserve and protect your wealth,  
at your pace.**


Time to look out for more than your future? Our advisory practice is about the relationship we forge with you: conserving your assets, understanding the vision for your loved ones and seeing the big picture to fulfill your goals.

**John H. Driscoll, Jr.**  
860.519.8183  
[jdriscoll@websterbank.com](mailto:jdriscoll@websterbank.com)



**WebsterBank®**

[websterbank.com](https://www.websterbank.com)

Investment, trust, credit and banking services are offered by Webster Private Bank, a division of Webster Bank, N.A. Investment products offered by Webster Private Bank are not FDIC or government insured; are not guaranteed by Webster Bank; may involve investment risks, including loss of principal amount invested; and are not deposits or other obligations of Webster Bank. Webster Private Bank is not in the business of providing tax or legal advice. Consult with your independent attorney, tax consultant or other professional advisor for final recommendations and before changing or implementing any financial, tax or estate planning advice. All credit products are subject to the normal credit approval process. Webster Bank, the Webster Bank logo and the W symbol are trademarks of Webster Financial Corporation and Registered in the U.S. Patent and Trademark Office. Webster Bank, N.A. Member FDIC. Equal Housing Lender  © 2022 Webster Financial Corporation. All Rights Reserved.

# Who's Who

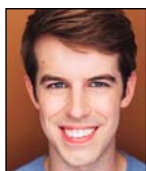


**THOMAS BEEBE** (*Dennis*) is thrilled to be back at The Legacy Theatre for this production after serving as the male understudy for *The Musical of Musicals (The Musical!)* earlier this season. As an actor, Thomas has appeared at Hartford Stage, The Bushnell, Playhouse on

Park, and Peak Performances among other venues. Favorite credits include Max in *The Producers*, Barféé in *Spelling Bee*, The Chairman in *DROOD*, and Nicely-Nicely in *Guys and Dolls*. Thomas is also an accomplished teaching artist and director currently working with Hartford Stage. Thomas holds a BFA in Musical Theatre from Montclair State and an MA in Theater Education. ThomasBeebe.com



**NICK FETHERSTON** (*Jonathan*) To read Nick's bio, please view page 27.



**DAN FRYE** (*Trevor*) is ecstatic to be back at the Legacy this season. His previous Legacy credits include *Beauty and the Beast* (Beast), *You're a Good Man, Charlie Brown* (Snoopy), *The Great Gatsby: A Live Radio Play* (Nick), *A Christmas Carol* (Fred), and *The*

*Tales of Christopher Robin and Winnie-the-Pooh* (Eeyore). Big thanks to the cast and crew of Legacy for all their hard work. Here's to many broken legs and an appropriately disastrous run!



**JIMMY JOHANSMEYER** (*Chris*) is an award-winning actor, costume designer, educator and co-producer of Pantochino. For sixteen years, he was the "resident villain" with the former Downtown Cabaret Children's Company. A graduate of Marist College, Jimmy has

performed on hundreds of stages including New York Stage & Film/ Powerhouse Theatre, Cortland Repertory Theatre NY, Walkkill River Repertory, NY, The Theatre Barn, NY, Millbrook Playhouse, PA, The Legacy Theatre in Branford and on the Main Stage of the Downtown Cabaret Theatre and several others. His costume designs and creations have been seen throughout the country and include *Cold As Ice* starring Oxsana Baiul at Gateway Playhouse on Long Island, the Off-Broadway premiere of *Matthew Passion* at The Theatre Barn, Cortland Repertory Theatre, Gorilla Theatre Tampa, The Emelin Theatre NY, Allenberry Playhouse, PA, Arundel Barn Playhouse, ME, to name a few. He teaches costume design at the R.J. Kinsella Magnet School of the Performing Arts in Hartford and continues his work as a freelance costume designer.



**ISAAC KUEBER** (*Max*) is thrilled to be doing his first show at Legacy Theatre! Select credits include: *Private Gomer* (Goodspeed Opera House), *Spring Awakening* (Florida Repertory), *Into The Woods* (Playhouse On Park), and *Friends: A Musical Parody!*

(Off-Broadway). All my love to friends, family and Jack! BFA: The Hartt School.



**CHRIS LEMIEUX** (*Robert*) is positively ecstatic to take a crack at his all-time favorite play! Past Legacy credits: *Midsummer Night's Dream* (Bottom), *A Christmas Carol* (Marley/Fezziwig/ Present), and *You're a Good Man, Charlie Brown* (Charlie Brown). He is a

proud member of the Actors' Equity Association. Lemieux is the spring musical director for Walsh Intermediate School and the youth summer theater program director for Branford Parks and Recreation Shoreline Theatre Company. With STC he also directed productions of *Puffs!*, *25th Annual Putnam County Spelling Bee*, and *Peter and the Starcatcher*. Chris is an avid writer and DnD DM and player. So much appreciation to Keely for this amazing opportunity and all the love to Mom, Dad, Danny, Allie & Ricci.



**MARY MANNIX** (*Sandra*) is thrilled to return to the Legacy, having previously appeared here as Brandy in the world premiere of *Just Desserts*, and Daisy in the professional premiere of Joe Landry's *The Great Gatsby: A Live Radio Play*. She is a founding member

of Pantochino Productions, and has been awarded two Broadway World Connecticut Awards for her work with the company. Favorite past roles include Maria in *West Side Story*, Susy in *Wait Until Dark*, Charlotte in *A Little Night Music*, Jaycee Rae in *The Waffle House Five*, and Bernice Britchard in *Checking in on Charles*. A recipient of the Goodspeed Guild Music Theater Award, Mary holds a Bachelor of Music in Musical Theatre from The Catholic University of America. She resides in Killingworth with her husband Scott, and their four children, Sean, Rowan, Nora, and Brennan. Endless gratitude and much love to her family for their support.



**FOR AS LONG AS WHEELS HAVE  
ROLLED ALONG ROADWAYS,  
AUTOMOBILES HAVE BEEN THE  
INSPIRATION FOR GREAT THEATRE.**

Be it the fantastical flying car in *Chitty Chitty Bang Bang*, the pride of the T-Birds in *Grease* or, more recently, a gleaming, stainless steel DMC DeLorean in the Broadway revival of *Back to the Future*, automobiles have always played a starring role in theatre. At Palumbo's, we give your vehicle the red carpet treatment whether it's a rising star or a gracefully fading light of Broadway. Enjoy the show!

**BEST WISHES TO  
THE CAST AND CREW FROM  
THE ENTIRE PALUMBO FAMILY.**



1 (203) 453-1788 [palumbosautomotive.com](http://palumbosautomotive.com)

# Who's Who



**MARIAH SAGE** (*Annie*) is thrilled to return to Legacy after playing Jocasta in Legacy's *Oedipus Rex* and Myra in *Deathtrap*. She has also performed around the country and in Europe at such theaters as: Yale Rep, The Public Theater, Ivoryton Playhouse, Cleveland Public Theatre, Valley Shakespeare Festival, The Trinity Rep, The Cleveland Play House, and The Apollo in Dusseldorf, Germany. Mariah earned her BFA in drama at NYU/Tisch and her MFA in acting at Brown University/Trinity Rep where she was a Stephen Sondheim Fellow. Her book *Start Standing: Audition Technique for Actors and Presenters* is available through publisher Kendall Hunt and on Amazon. Mariah teaches acting at Quinnipiac University and is the founder of Present & Perform, an audition preparation and private coaching company in New Haven. [www.presentandperform.com](http://www.presentandperform.com)



**COLLEEN CALLAHAN** (*Swing & Properties Designer*) is thrilled to be returning to the Legacy Theatre Team both onstage and off! She is a recent graduate of Western Connecticut State University with a degree in Theatre Arts. Her previous performance experience includes WCSU's *Noises Off* (Dotty Otley), WCSU's *The Resistible Rise Of Arturo Ui* (Betty Dullfeet), and WCSU's *In the Open* (Devon). Her previous backstage experience includes Legacy Theatre's *The Musical of Musicals* (*The Musical!*) (Props Designer & Assistant Stage Manager), Legacy Theatre's *Beauty and the Beast* (Assistant Props Designer & Wardrobe Supervisor), Yale Opera's *The Rape of Lucretia* (Run Crew), Legacy Theatre's *A Christmas Carol* (Assistant Stage Manager & Wardrobe Assistant), and WCSU's *Hand To God* (Assistant Costume Designer).



**EMMETT CASSIDY** (*Swing & Fight/Stunt Choreographer*) is a Branford native, with a true passion for acting, traveling, and storytelling. He has performed in several productions with Legacy, such as *A Christmas Carol* (Fred, Young Scrooge), *The Last Five Years* (Jamie), *Hamlet* (Laertes), *Private Lives* (Elliot), *Joan Joyce* (Mr. Marinara, Joe Joyce Sr., Jr., Reporter), *Jamal* (Connor), *Oedipus Rex* (Chorus Leader / Shepherd). Other productions include *Hairspray* (Link Larkin) and *Pirates of Penzance* (Frederick). A graduate of The American University of Rome, Emmett's other passions offstage include music, reading, writing, carpentry, and playing Dungeons & Dragons with his friends.

**KEELY BAISDEN KNUDSEN** (*Director*) To read Keely's bio, please view page 23.

**HENRY LEWIS, JONATHAN SAYER & HENRY SHIELDS** (*Playwrights*) Henry, Henry, and Jonathan met while training at The London Academy of Music and Dramatic Art (LAMDA). All core members of Mischief Theatre, they had already worked in comedy together for several years before they started out as a writing team. The three's first piece was *The Play That Goes Wrong* (winner – Best New Comedy – Olivier Awards and What's On Stage Awards). The show started out on the London and Edinburgh fringe before touring the UK and internationally and then returning to the West End in September 2014, where it is still running. It's also playing on Broadway and heading out on a US tour in 2018 and has been performed in over 20 other countries around the world. *Peter Pan Goes Wrong* was the trio's second piece, opening in November 2014 for a UK tour before a hugely successful West End season in Christmas 2015. Henry, Henry, and Jonathan recently adapted the script of *Peter Pan Goes Wrong* for the BBC, which was filmed with the original West End cast and broadcast to rave reviews on New Year's Eve. They were invited back to wreak more havoc at the BBC in 2017 with *Christmas Carol Goes Wrong* on BBC1. *The Comedy About a Bank Robbery* marks their third writing project as a trio and earned them another Olivier Nomination. @mischiefcomedy and mischieftheatre.co.uk

**JAMIE BURNETT** (*Scenic & Lighting Designer*) is a graduate of Carnegie Mellon University, recipient of the 2005 New Haven Arts award, and Founding member of The Elm Shakespeare Company. Lighting Designer at Elm Shakespeare for 26 years and Set Designer until 2009. Lighting Design credits include International Festival of Arts and Ideas 2018, *Requiem for an Electric Chair*; Iseman Theater 2017, *Never Stand Still*. CCT: *Skeleton Crew*, *Rasheeda Speaking*, *Jesus Hopped the A Train*, *Sunset Baby*, *Topdog/Underdog*. SCSU: *Stop Kiss*, *Much Ado About Nothing*, *The Boyfriend*, and *Our Country's Good*. SHU: *In The Heights*, *Jesus Christ Superstar*. Citywide Open Studios: New Haven Armory; Projects2k: Stamford Train Station Façade Lighting; Designer/Production Manager for *Terra Tractus* (*The Earth Moves*) (2005), *Terra Mirabilia* (2001), *Terra Lumina* and *Terra Continuum* (1999): performed in the Stony Creek Granite Quarry; PNM's Branford *Luminata* (2010) lighting Branford Green Town Hall. His company, Luminous Environments, specializes in theater and TV studio renovations and public art installations involving specialized lighting. Recent projects: Branford High School's Cathaynn Roding Auditorium, Fairfield Community Theatre, and Legacy Theatre.



Crest Lincoln  
applauds the shoreline  
and the arts.



**CREST LINCOLN**  
O F W O O D B R I D G E

185 Amity Road, Woodbridge, CT  
203-389-7100 [www.crestwoodbridge.com](http://www.crestwoodbridge.com)



# Who's Who

---

**ELIZABETH BOLSTER** (*Costume Designer*) has been the Wardrobe Supervisor at the Yale Repertory Theatre since 2002 where she enjoys working backstage and training student work study crews. Outside of her job at Yale she is a Costume and Scenic designer whose work has been seen at Elm Shakespeare Company, Yale Baroque Opera Project, and Trinity College Hartford. Previous Legacy credits include costume designs for *Deathtrap*, *Just Desserts*, *The Last Five Years*, and *You're a Good Man, Charlie Brown*. Professional training: MFA in Costume Design from The Conservatory of Theatre Arts and Film at SUNY Purchase, and a BFA in Performance Production from Cornish College of the Arts in Seattle, WA.

**ADAM JACKSON** (*Sound Designer*) is thrilled to be a part of Legacy's third season! Adam has worked on over 50 productions as an actor and designer. He has done technical theatre design work for Walsh Intermediate School, the Branford High School Fall Play and Spring Musical, Ivoryton Playhouse, WCSU Opera, and Elm Shakespeare Company. He is also the resident technical supervisor at Shoreline Theatre Company where he particularly enjoys working on the summer camp shows. Adam recently graduated from Western Connecticut State University with a BS in Music Education and a concentration in classical trombone. He runs sound for The River Church in Danbury and occasionally has the pleasure of being invited into theatre classes to speak to students about the joys of technical theatre!

**RICH BURKAM** (*Master Carpenter*) came to Connecticut to study music and music recording at UNH. He played in bands such as 4:20, Space Cushion, and Over The Line. His studies continued, learning to be a luthier under Barry Lipman and Chris Tatalias, giving him a taste for fine woodworking. Richard now owns a woodshop that makes fine furniture, in a space which is shared with lighting designer Jamie Burnett. Together they have built sets for many production companies, including Elm Shakespeare, Yale Baroque Opera Project, and many small black box theater productions.

**SARAH PERO** (*Production Stage Manager*) To read Sarah's bio, please view page 25.

**GILLIAN LEBLANC** (*Assistant Stage Manager*) is a recent graduate of Daniel Hand High School where they spent four years as an active member of stage crew in the theater program. They are currently taking a gap year before studying film production and technical theater in college. Gillian's passion for theater truly sparked when they had the opportunity to design and operate lighting for Hand's production of *Rent*. They have also designed lighting for *Clue*, *The Canterbury Tales*, and *The Lightning Thief: A Percy Jackson Musical*. Gillian most recently had the opportunity to be on the run crew for Legacy Theatre's *Beauty and the Beast*, and they are thrilled to be a part of another Legacy production. They would like to thank their family and friends for being supportive.

**ACTORS' EQUITY ASSOCIATION (AEA)** was founded in 1913, and AEA represents more than 50,000 actors and stage managers in the United States. Equity seeks to advance, promote and foster the art of live theatre as an essential component of our society. Equity negotiates wages and working conditions, providing a wide range of benefits, including health and pension plans. AEA is a member of the AFL-CIO, and is affiliated with FIA, an international organization of performing arts unions. The Equity emblem is our mark of excellence. [www.actorsequity.org](http://www.actorsequity.org)

## SPECIAL THANKS FOR *THE PLAY THAT GOES WRONG*

Emmett Cassidy, Pantochino Productions,  
Elm Shakespeare Co, Jamie & Rich Dynamic Duo,  
and Reeves!

King Charles Cavalier Spaniel Portrait  
painted by Katie Callahan

Multiple music selections by Kevin MacLeod  
([incompetech.com](http://incompetech.com))

Licensed under Creative Commons:  
By Attribution 4.0 License

<http://creativecommons.org/licenses/by/4.0/>

---

Follow Legacy on social media for behind-the-scenes photos,  
interviews, exclusive offers and more!



[facebook.com/LegacyTheatreCT](https://www.facebook.com/LegacyTheatreCT)



[@legacytheatret](https://www.instagram.com/@legacytheatret)



[@legacytheatret](https://twitter.com/@legacytheatret)

# Your home is worth a lot to you.

When you are ready to make a move, don't sell yourself short.



Scan the QR code with your phone's camera to receive a complimentary Equity Analysis of your home.



## Calcagni

REAL ESTATE

Selling homes & helping CT's home buyers for over 50 years.

 /CalcagniRealEstate

[calcagni.com](http://calcagni.com)

 /CalcagniRealEstateCT

# Legacy Who's Who

---

## LEGACY THEATRE STAFF

Managing Director	JEFF PROVOST
Artistic Director & Co-Founder	KEELY BAISDEN KNUDSEN
Co-Founder	STEPHANIE STIEFEL WILLIAMS
Business Manager	KIERSTEN BJORK
Production Manager	SARAH PERO
Development Manager	ANNE RUNOLFSSON
Producer of Broadway Concert Series & Community Arts Coordinator	COLIN SHEEHAN
Community Outreach	MARY LEE WEBER
Box Office Manager	NICK FETHERSTON
Box Office Associate	MELISSA STARKWEATHER
Front of House Manager & COVID Safety Manager	JEFF ZEITLIN
Front of House Alternates	RICH AFRAGOLA, KIERSTEN BJORK, CHRIS LEMIEUX, KELSEY MULLIGAN, KENNY PELPHREY, NICK FETHERSTON, MARY LEE WEBER
Graphic Designer	JOE LANDRY
House Photographer	SAMUEL BIBBINS

---

## STAFF FOR *THE PLAY THAT GOES WRONG*

Scenic Artists	LAURIE FLAHERTY, DAVID SEPULVEDA, AMIE ZINER
Wardrobe Supervisor & Run Crew	ALAINA DWYER
Run Crew	JULIE ORENSTEIN, GABRIELA ESPOSITO

---

### BOARD OF TRUSTEES

Stephanie Williams, *President*  
Jana Shea, *Vice President*  
Kathleen Murphy, *Secretary*  
Luke Williams, *Treasurer*  
Damian Doria  
Katina Gionteris  
Charles Grady  
Brian Knudsen  
James Roday Rodriguez  
Tom Shea  
Jeff Provost, *Ex-Officio*

### SPECIAL THANKS

Legacy Volunteers  
TYCO  
The Stony Creek Community  
The Bjork Family  
Brian W. Knudsen  
Nancy Smith  
Don Weinbach  
Joe Landry  
Christensen Landscaping (Lawn Company)  
Auntie Bella (Cleaning)

---

## Contact Legacy Theatre

Box Office: (203) 315-1901 (Mon-Fri 10am-3pm)

Email: [Info@LegacyTheatreCT.org](mailto:Info@LegacyTheatreCT.org)

Website: [www.LegacyTheatreCT.org](http://www.LegacyTheatreCT.org)

Gift Certificates available online or through the Box Office.

**The arts make a bridge  
ways that nothing else**



**GSB, the Branford Community Foundation, and The Guilford Foundation are proud mainstage season sponsors of the *Legacy Theatre*.**

across this world in  
can.” – *Julie Andrews*



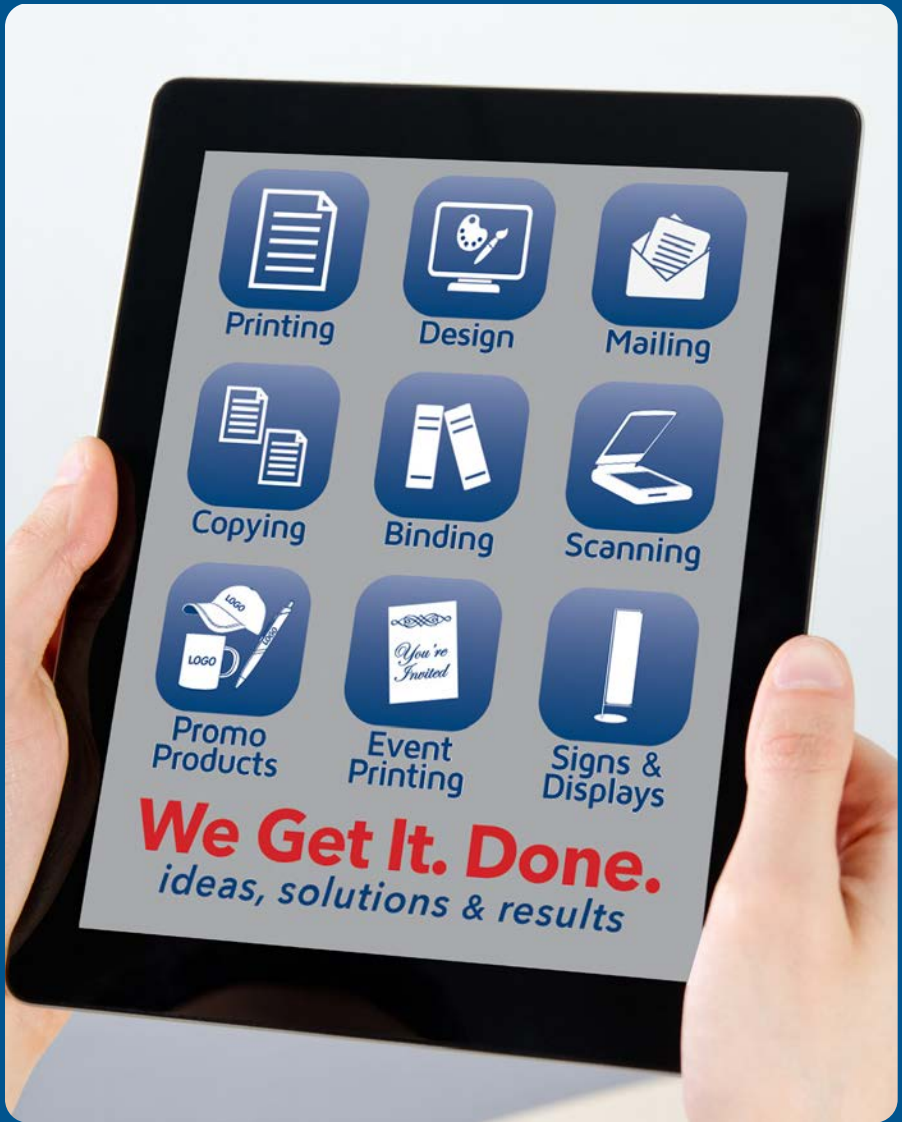
**BRANFORD**  
Community Foundation



Sponsored by the Branford Community Foundation and The Guilford Foundation with funding provided by GSB.

# TYCO Print

making *print* happen



**New Haven**  
296 Elm Street • 203.777.TYCO

**Online 24/7**  
[www.TycoPrint.com](http://www.TycoPrint.com) •   

**Branford**  
618 Main Street • 203.481.TYCO

# Legacy Who's Who



**JEFF PROVOST** (*Managing Director*) was a Founding Advisory Committee member of the Fairfield Theatre Company (FTC), eventually becoming their first Managing Director while successfully leading their "FTC Moves Downtown" capital campaign. He

was the first Director of Marketing & Public Relations at Westport Country Playhouse during Joanne Woodward's earliest seasons as Artistic Director and held the same title at Hartford Stage during Michael Wilson's new artistic leadership. He created and managed the subscription-driven Family Broadway Series at the "new" Oakdale Theatre, during the time that they became the largest theatre in New England. Jeff held management positions at the Williamstown Theatre Festival and Yale Repertory Theatre, as well as Off-Broadway and on, with the 1994 Tony-award-winning production of *Medea*, featuring Dame Diana Rigg. As an arts marketing consultant, Provost was invited to be a guest lecturer/presenter for the Connecticut Commission on the Arts.

After holding management positions in the non-profit arts and commercial entertainment industries, Provost joined Red 7 Media in Norwalk where he helped launch the Event Marketing Institute. He founded PRO Management LLC in 2015 where he worked with a wide variety of clients including the Experiential Designers & Producers Association, the Healing NET Foundation, and McDonald's.

He completed his undergraduate degree at The Catholic University of America in Washington DC., followed by graduate work at Yale University, where he earned his master's degree in Theatre Management. When not enjoying his lifelong passion for live theatre, Provost volunteers his time with the Make-A-Wish Foundation's CT Chapter where he performs magic under the stage name of "Mr. Jeffo". Jeff and his wife Traci were very happy to have recently become Branford residents this year and are enjoying being a part of the shoreline community this summer.



**KEELY BAISDEN KNUDSEN** (*Artistic Director & Co-Founder*) An award-winning director, Keely has performed, directed, and choreographed internationally in plays, musicals, operas, and dance companies in hundreds of theatrical productions

and has performed in 48 of the United States and in the UK. Realizing her vision of a new theatre company on the Connecticut Shoreline, Keely's ideals of inspiring, inclusive work that uplifts the human spirit and connects communities formalized in the creation of the Legacy Theatre with Co-Founder Stephanie Stiefel Williams, a performing colleague and dear friend.

Keely has directed, choreographed, and taught a myriad of performing arts courses at such institutions as Quinnipiac University, Yale University, Fairfield University, Hartt School of Drama, Southern Connecticut State University, Westminster College, and was the Director of Education of New Haven's acclaimed Elm Shakespeare Company for several years. Additionally a composer/lyricist and playwright, she is a member of ASCAP and a writer/curator for Rewls Productions ([www.rewlsproductions.us](http://www.rewlsproductions.us)). Her directing has been heralded by the *Arts Paper* as "...visually striking, emotionally moving" and "captivating" and of her direction of *Hamlet* it was said, "Knudsen has made the notoriously difficult Shakespearean language accessible." Her creation of the Wheel Life Theatre Troupe has been an especially rewarding program as she acts and directs with those who ambulate with crutches and wheelchairs.

Her BFA is from New York University's Tisch School of the Arts, at which she graduated first in the class, and she received her Masters Degree in Drama on full scholarship from The Royal Scottish Academy of Music and Drama in Glasgow. Keely, her husband Brian, and five children (Saviah, Liviana, Wynter, Emery, and Reeves) reside in Guilford, CT.



**STEPHANIE STIEFEL WILLIAMS** (*Co-Founder & Chairperson of the Board*)

is an active and versatile performer in musicals, concerts, and plays and has appeared in numerous locations throughout the Northeast. A member of Actors' Equity Association, she has appeared professionally in a variety of roles at venues such as Broadway's Marriott Marquis, Legacy Theatre, Hartford Stage Company, Foxwoods' Fox Theatre, Atlantic City's Tropicana, Turning Stone Casino, and the Garde Arts Center. Among these roles, her favorites include Aldonza in *Man of La Mancha*, Anita in *West Side Story*, Lola in *Damn Yankees*, Maria in *The Sound of Music*, and Guenevere in *Camelot*. Although her professional focus has been in musical theatre, she also has been engaged frequently as a concert soloist, as well as an a cappella ensemble singer. Locally, Stephanie is a proud founder, repertory member, and trustee president at Legacy Theatre where she has starred in the critically-acclaimed productions of *The Musical of Musicals (The Musical!)*, *I Do! I Do!*, and *Barefoot in the Park*. She also appeared as a featured vocalist in the wildly popular *Mack is Back!*

In addition to her work with Legacy, Stephanie sits on the Performing Arts Advisory Council at the University of Notre Dame and has been a member of the Board of Trustees at the Goodspeed Opera House. She has become involved on a producing level with critically-acclaimed productions



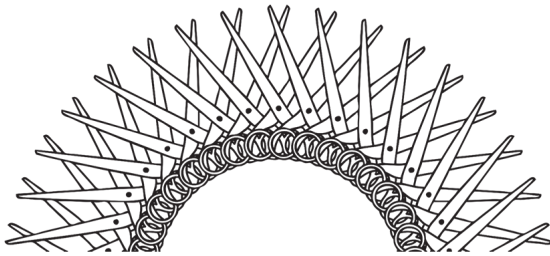
Gaylord  
Specialty Healthcare

Physical Therapy

**EXPERTS IN  
SPORTS MEDICINE**

Cheshire · Cromwell · Madison  
· North Haven · Wallingford

[rehabwithapro.org](http://rehabwithapro.org)



SALON ZENA

LIGHTHOUSE SQUARE  
705 BOSTON POST RD UNIT 7A  
GUILFORD, CT 06437

[SALON.ZENALLC@GMAIL.COM](mailto:SALON.ZENALLC@GMAIL.COM)  
203.533.7288 | 203.533.7936



# Legacy Who's Who

of *Gypsy* and *Showboat* in London's West End, the revival of *Sweeney Todd* in New York, and Broadway's *Escape to Margaritaville*. As a former Miss Connecticut, she represented our state at the Miss America Pageant in Atlantic City. She holds a Bachelor of Arts, magna cum laude, from Fairfield University and a Juris Doctorate with honors from the University of Connecticut School of Law. Stephanie is the proud mother of two adult children, Valerie and Rick, and lives in Guilford with her wonderful husband, Luke.



**KIERSTEN BJORK** (*Business Manager*) has performed with companies such as Legacy Theatre, Shoreline Theatre Company, Theatre Fairfield, and more. Favorite performing credits include *Footloose* (Ethel McCormack), *The Spitfire Grill* (Percy), *Beauty and the Beast* (Enchantress, Madame D'Arque), *[title of show]* (Susan – BroadwayWorld Award Nomination: Best Performer in a Musical), *Joan Joyce!* (Young Joan Joyce – BroadwayWorld Award Nomination: Best Performer in a Musical), *Chicago* (Junel/Squish\*), *A Christmas Carol* (Fan/Mrs. Fezziwig/Others), *A Princess Tea* (Evil Queen), *Woman and Scarecrow* (Auntie Ah – BroadwayWorld Award Nomination: Best Performer in a Play), *Titus Andronicus* (Demetrius), *The Tales of Custard the Dragon* (Ink), *Fortinbras* (Laertes), *Authenticity* (Alice), and *The Tales of Christopher Robin & Winnie-the-Pooh* (Rabbit). Kiersten has also worked on numerous productions from the creative and technical sides, with favorites being *Rabbit Hole* (Scenic Designer), *The Curious Incident of the Dog in the Nighttime* (Master Carpenter), and *I Do! I Do!* and *The Last Five Years* (Assistant Stage Manager).

At Legacy, Kiersten worked as the Theatre Manager for the past two years and is excited to be a part of this third season in a role that covers everything from marketing and communications to finance and administrative work! She is a 2021 graduate of Fairfield University, graduating summa cum laude and Phi Beta Kappa with degrees in Theatre and English. In addition to her work with Legacy, Kiersten does freelance theatre work as a stage manager, technician, and carpenter for the Quick Center for the Arts and Theatre Fairfield. She is also the Marketing and Communications Specialist for the Branford Community Foundation, a Theatre Critic with the Connecticut Critics Circle, and a Book Reviewer for Booktrib.



**SARAH PERO** (*Production Manager*) Born and raised in New Haven, CT, Sarah has been involved with local community and professional theatre for 20+ years. Acting at the age of 10, and directing at 16, Sarah received her BFA in Theatre, with a concentration in

directing from the University of Rhode Island. Right after college, Sarah was a part-time drama teacher in New Haven Public Schools and also taught theatre classes with Performing Arts Programs (South Windsor, CT). Sarah then worked at the Music Theatre of CT (Norwalk, CT) School of Performing Arts, wearing many hats as Administrative Manager, Teaching Artist, Director, Music Director, and Choreographer for the school. Sarah also managed the Box Office and was the Resident Sound Designer for MTC's Professional Main Stage. Following MTC, Sarah worked as Administrative Manager at the Downtown Cabaret Theatre (Bridgeport, CT). As a Production Stage Manager for various Theatre Productions in Rhode Island and Connecticut, some of her favorites include: *Tick, Tick Boom!*; *Little Women: The Musical*; and *You're a Good Man Charlie Brown*. Most recently, Sarah served as the Production Stage Manager for multiple Legacy productions in the 2021, 2022, and 2023 seasons. Sarah is thrilled to officially join the Legacy team as Production Manager.



**ANNE RUNOLFSSON** (*Development Manager*) has entertained audiences worldwide for the past 35 years. A veteran of the stage and concert venues, her Broadway and National tour appearances include: *Phantom of the Opera* (Carlotta), *Victor/Victoria* (Stand-by for Julie Andrews and Liza Minnelli), *Les Misérables* (Fantine), *Cyrano: The Musical* (Roxane), *The Secret Garden* (Lili), *Aspects of Love*, and *James Joyce's The Dead* (Gretta). As a soloist, Anne has performed at such iconic venues as The Hollywood Bowl, Carnegie Hall, Radio City Music Hall (with tenor Jose Carreras), The 02 Arena (London, with Julie Andrews), The Concertgebouw (Amsterdam), The Kennedy Center, Wolf Trap and countless others. Anne was awarded New York City's prestigious MAC award for Best Female Singer. Her cabaret appearances include *Birdland*, *54 Below*, *The Green Room 42*, *92nd Street Y*, *The Russian Tea Room*, *Rainbow and Stars*, and *Hollywood's Cinegrill and Gardenia*. Show recordings include: *Les Misérables* International Cast, *Listen to My Heart*, and *You Oughta Be On Broadway*, and a solo album *At Sea*. Anne co-wrote and performs in two shows with singer/actress daughter Tess Adams: *The Story Goes On: A Broadway Family Journey* and *Heroine's Song*. Anne made her directorial debut in December 2021 in Los Angeles with *My Unauthorized Hallmark Movie Musical*. She has also appeared on NBC's *The Blacklist*. Anne is principal partner of Runolfsson Entertainment which includes "Sing With Anne," a vocal coaching practice. She has taught voice and performance at the Orange County School for the Arts in California and New York University.



*LOCALLY OWNED AND OPERATED*

**Full Service:**

- Framing
- Millwork
- Trusses
- Engineered joists
- Engineered beams
- Windows
- Kitchens
- Trim



Our professional sales and service staff work hard to ensure timely deliveries and efficient order production. We want your business!

**1.800.445.8623**

**381 State Street, North Haven, CT**

**[www.nationallumberinc.com](http://www.nationallumberinc.com)**

TITLE SPONSOR *of*

**THE PLAY THAT GOES WRONG**

# Legacy Who's Who



**COLIN SHEEHAN** (*Producer of Broadway Concert Series & Community Arts Coordinator*) is a local arts enthusiast and serves as the Arts, Culture & Special Events Coordinator for the Town of Branford, Director of The Branford High School Performing Arts'

Spring Musical, and Co-Founder and Co-Artistic Director of Branford Parks and Recreation Shoreline Theatre Company. He graduated from Branford High School and continued his studies at Wagner College with a B.A. in Theatre and Speech Performance. In 2003, he made his Broadway debut in the closing night production of *Les Misérables*. In '99, Colin appeared numerous times on *The Rosie O'Donnell Show* and worked for three seasons on *The Wendy Williams Show*. Colin has produced, directed, hosted, and performed in the tri-state area and abroad with Broadway Cruises, Nickelodeon Cruises, and R Family Vacations Cruises. Colin is a philanthropist and has hosted, produced and raised funds and awareness for many organizations in Branford and beyond.



**MARY LEE WEBER** (*Community Outreach*) is a Marketing and Communications consultant who has lived in Branford since 1988. She held the position of Director of Marketing and Community Development for the ABC affiliate WTNH-8 for 17 years where she

was responsible for non-traditional revenue and community partnerships. With a local creative team she Executive Produced a short documentary for the Stony Creek Museum called *Born at The Water's Edge*. It features interviews and information about the Thimble Islands and the history of Stony Creek including brief segments about Legacy Theatre, the Stony Creek Fire and Drum Corps and the Quarry. Mary Lee also helped with the Legacy Theatre productions while they were in residence at the Stony Creek Museum in 2018-19. She joined Legacy to help with Marketing and Community Outreach and is thrilled to play even a small part in helping Legacy bring theatre back to Stony Creek.



**NICK FETHERSTON** (*Box Office Manager*) is an actor operating out of the New Haven area. He is a graduate of Quinnipiac University with a degree in Theater Studies and is also an alumnus of The National Theater Institute at the Eugene O'Neill Theater Center.

Previous Legacy Theatre acting credits include Lysander in *A Midsummer Night's Dream*, Rosencrantz in *Hamlet*, a brief cameo as The Prince in this year's *A Princess Tea* and a Gargoyle in *Disney's Beauty and the Beast* for which he also served as the Assistant Stage Manager. Other notable credits include Don John/The Sexton in *Much Ado About Nothing* (Capital Classics), various roles in the

2019 *New Play Festival* (The Barrow Group NYC), Albert in *Goldfish* (New Haven Theater Company), and Mr. Bingley in *Pride and Prejudice* (The Little Theatre of Manchester). Nick is also the Box Office Manager here at The Legacy Theatre (he might've sold you a ticket to this very show). He is also an instructor for a variety of acting classes that Legacy provides. He thanks you for supporting his work and hopes you enjoy the show! Website: [nickfetherston.com](http://nickfetherston.com) Instagram: [@nfetherstonblue](https://www.instagram.com/nfetherstonblue)



**MELISSA STARKWEATHER** (*Box Office Associate*) An enthusiastic theatre lover, Melissa Starkweather has accrued a wide variety of experiences throughout the country and abroad. From her early years performing children's roles with Tulsa Opera to her current work as a

choral singer and music teacher, Melissa is dedicated to the advancement of live performance in our community. Melissa earned her Bachelor of Music degree in Vocal Performance with a minor in Theatre from Belmont University, where she interned with Nashville Opera's education department. During her time in Nashville, she worked as a Box Office Assistant at Tennessee Performing Arts Center and developed a love of helping to provide community members with an all-around positive theatre experience. She then sought out a Master of Music degree in Opera Theatre at University of South Carolina, where she began working as an administrative assistant and stage manager for FBN Productions, a local children's opera company, and furthered her box office and front of house experience at Koger Center for the Arts. After graduating, Melissa has worked as a freelance stage manager, performer, and classroom music teacher. Recently, she served as a Production Management Apprentice for Berlin Opera Academy's productions of *Le Nozze di Figaro*, *The Crucible*, and *Die Zauberflöte*. Some of her favorite roles include Rosalinde in *Die Fledermaus* (Belmont Opera Theatre), Susannah in *Susannah* (Opera at USC), Ham in *Noye's Fludde* (Tulsa Opera), and Ghost of Christmas Past in *A Christmas Carol* (American Theatre Company). Additionally, Melissa will soon be singing in Handel's *Messiah* with New Haven Symphony Orchestra. Melissa is so excited to join the team at Legacy Theatre and hopes to continue to provide patrons with an excellent, uplifting experience at the theatre.



**JEFF ZEITLIN** (*Front of House Manager*) A long-time resident of Guilford, CT, Jeff's love of theatre was taken to the next level when his daughter was a part of the Guilford High School Theatre Arts program. Jeff served as a Board Member of the school's Theatre Arts

Parents Support. He then became the Box Office Manager and Front of House Advisor for GHSTA. He continues in that

**INCREASE YOUR EMPLOYABILITY WITH**



# ALBERTUS

## CAREER **eX**CELERATOR

Google

Meta

IBM

INTUIT

SAS



Albertus graduates are even more marketable in a highly competitive job market.

We've curated a list of stackable micro-credential and certificate programs in high-demand fields to complement skillsets and bridge the gap between knowledge and experience.... preparing you for career success.

Career eXcelerator is available to full-time Albertus students at *no additional cost*. They are self-paced, short-term, fully online, and taught by industry experts from corporations such as Google, IBM, Intuit, Meta, Salesforce, SAP, and Tally in a wide array of programs ranging from Google Data Analytics and Meta Social Media Marketing to Salesforce Sales Operations and Tally Bookkeeping.

**The value of an Albertus education just got stronger.  
Level up and rise to the top of the applicant pool with  
Albertus Career eXcelerator.**



# ALBERTUS MAGNUS COLLEGE

*We have faith in your future.*

700 Prospect Street, New Haven • [albertus.edu/excelerator](http://albertus.edu/excelerator)

# Legacy Who's Who

volunteer role today. Along with his wife, Alyson, he was an usher at The Ivoryton Playhouse. Most recently, he was a House Manager at The Katherine Hepburn Cultural Arts Center ("The Kate") in Old Saybrook. He first became aware of The Legacy Theatre when attending a couple of fundraisers a few years ago. He was taken by the plans for the historic building and the prospect of bringing high quality Broadway productions and performers to the shoreline. Jeff's community involvement also extends to Guilford A Better Chance where he is a member of the Board of Directors. When not at the theatre, Jeff is Loyalty Manager for IKEA in New Haven, focusing on Public and Community Relations. Jeff looks forward to welcoming theatre-goers from near and far to The Legacy Theatre!



**JOE LANDRY** (*Graphic Designer*) has had the pleasure of being part of the Legacy family for the past number of years. He has designed for several theatres, including MTC, Westport Country Playhouse, Fairfield Theatre Company and Pantochino Productions.

As a playwright, his plays have been produced throughout the world, including right here at Legacy, where his adaptation of *The Great Gatsby: A Live Radio Play* had its professional premiere last season. [www.joelandry.com](http://www.joelandry.com)

## Support Legacy Theatre

As a 501(c)3 nonprofit organization, Legacy Theatre relies on the generosity of our donors and supporters to bring performances, classes, job opportunities and more to the shoreline community. Please consider making a tax-deductible donation today, or supporting us through other avenues. Please contact Kiersten Bjork, Business Manager, at [kiersten@legacytheatrect.org](mailto:kiersten@legacytheatrect.org) with any questions.



### NAMING OPPORTUNITIES

Leave your Legacy in this historic, fully restored, state-of-the-art, gorgeous theatre. Naming Opportunities are still available for seats and more.



### DEDICATE A PERFORMANCE

Honor someone special in your life by dedicating a performance at Legacy Theatre. Dedicating a performance is truly a unique way to commemorate a birthday, anniversary, or achievement. (Please Note: Tickets are not included in this Dedicate a Performance Program.)



### DONATE

Visit [www.legacytheatrect.org/donate](http://www.legacytheatrect.org/donate)  
Scan to learn more and to partner with us!

*Legacy Theatre is a tax-exempt, 501(c)(3) organization and donations are tax-deductible to the fullest extent allowed by law.*



**AT&T**

LEGACY THEATRE  
ANNUAL  
GIVING  
SOCIETY

Will you be a spark?

This year, a wonderful group of arts lovers became members of the Legacy Theatre's Annual Giving Society.

These people are committed to sustaining a vital part of humanity. They know the power of theatre in engaging our imagination and creating community.

Their generosity will provide the operating and programmatic funding needed for our theatre to thrive.

We're so grateful to every member of the Annual Giving Society!

And a special thanks to the anonymous donor who matched every gift received by August 31st.

It's not too late to join this group!  
You can become a member of the Annual Giving Society with an annual gift of \$1000 or more.

Visit the Box Office, Call (203) 315-1901,  
Give Online at [LegacyTheatreCT.org](http://LegacyTheatreCT.org), or  
Scan the Code on this Page.



Thank You!



**stony creek market**

breakfast & lunch  
*open daily year round*

**stony creek pizza**

evenings *seasonal hours*

178 thimble island rd • stony creek • branford

203-488-0145

[www.stonycreekmarket.com](http://www.stonycreekmarket.com)



**WYETH  
ARCHITECTS**

[WyethArchitects.com](http://WyethArchitects.com)  
Architects <sup>of the</sup> Legacy Theatre

Guitars  
Mandolins

Acoustic  
Music  
.Org<sup>®</sup>

1250 Boston Post Road  
Guilford, CT  
(203) 458-8353



# Legacy Theatre Donors

Legacy Theatre is grateful to the many contributors whose generous gifts provide vital resources for our performances, artists, and services.

## THE ANNUAL GIVING SOCIETY

FOUNDER (\$25,000 and above)	PRODUCER (\$10,000-\$25,000)	DIRECTOR (\$5,000-\$9,999)	ACTOR (\$2,500-\$4,999)
The Martyn Foundation Tom and Jana Shea Luke and Stephanie Williams	Atlas Healthcare Roslyn Milstein Meyer James Roday Rodriguez	Hadassa and Phil Bak Burry Fredrik Foundation The Cassella Family Mr. and Mrs. Gordon Geballe Mr. & Mrs. Ted Kennedy Earl Tucker	Madelyn Cerritelli Todd Harthan Joyce Mailhouse Rick Mayer Cynthia Parker Todd Renz Mark Sonnenschein Chris Ulbrich
<b>ARTS PATRON (\$1,000-\$2,499)</b>			
Kenneth Allen and Lynn Manizza Juliette Andrews Allied Printing Services Bill Chapin and Andrea Bloom Todd Depasquale Andrew Eder George Eliades Mr. and Mrs. Ted Ells Judith Fisher Betty Foster	Julia Francis Matthew Holbrook Bill Horne and Roberta Brilmayer Jeffrey Hoffman Patricia Jacobson Jeffrey Allen Johnson Linda Landis Mosaic Marketing Christopher McLeod Tom and Nancy Patton	Marcia Rock Mr. and Mrs. Patrick Ruwe Town Fair Tire Foundation Bruce and Mariah Seymour Curtis and Ann Sorensen Hal Spitzer Kate Walbert Don and Anne Weinbach Wendy Wheeler and Shawn Reilly David Wildstein	

---

## BENEFACTORS (\$100-\$999)

Navaraj Ahuja Anonymous Elizabeth Appel Robert Babcock Sharon Barnabei Susan Barnes David Beckerman Alfred Bertoline Christine & Ken Bjork Kathleen Bloss Dean Brown Lauren Brown Victor Burga John Bysiewicz Mary Cahalane Allison Camarco Marc Camille Sharon Collins Don Conklin Lisa Courtney Joanne Cristiano Susan Crockford-Peters Linda Cronan James Demonaco Matthew Detmer	Stacy Donohoe Edward Dubendorf Eversource Daniel F Gilmore Gwendolyn Fetherston Julie Fitzpatrick Mary Ann Frank Gordon and Shelley Geballe Katina Gionteris Josephine Giordano Linda Giordano Matt and Jennifer Glass Elaine Gluck Fred Gorelick and Cheryl MacLachlan Peter Hawes Caroline Henningsen Pamela Hetherington Matt Hoey Alan Horwitz Laura Jacobs Eliot Jameson Shana Kemp Joan Krochmal	John Lamirande Lauren Lepene Christopher Libenson Elizabeth Lofquist Jim Love Diane McGuire James McKay Patricia Mezzi Naomi Mitchell Kathleen Murphy Joseph Nardini Dantram Nguyen Curtis O'Connor Charlotte Parker Nicole Paxson Richard Pognataro Nicholas & Laureen Pekar Carla Pero Ryan Pliner Traci Provost David Rock Cathyan Roding John Ruckes Thomas Sansone Stephanie Schechter	Sea Mist Cruise Dr. & Mrs. Ronald Savin Joe Siart III Jayme Sifling Tina Sildker Harold Spitzer Neil Srivastava Joan A. Steitz Donna Stern Jay Stiefel Shepard and Marlene Stone Stephanie Szostak Nora Taylor Jacqueline Torcellini Earl Tucker Jr Jay Webb Mary Lee Weber Jeffrey Weber Jenya Weinreb Laurence Weller Wyeth Architects, LLC John and Pat Zandy Jeffrey Zeitlin
--	--	---	---



in partnership with



# FALL 2023/WINTER 2024 CLASS OFFERINGS

## TODDLER TIME

In partnership with **Branford Parks and Recreation**

Sing and Dance - each week a holiday theme! Class will include singing and dancing with ribbons, learning pitch and notes, sing-a-longs, and make-believe games perfect for your toddler! (Parent must stay throughout class).

### MULTIPLE SESSIONS:

- Saturdays, Oct 14-Nov 11 9:15-10:00 AM (5 weeks)
- Saturdays, Jan 20 - Feb 17 9:15-10:00 AM (5 weeks)
- Tuesdays, Oct 17- Nov 14 9:15-10:00 AM (5 weeks)
- Tuesdays, Nov 21 - Dec 19 9:15-10:00 AM (5 weeks)
- Tuesdays, Jan 9 - Feb 6 9:15-10:00 AM (5 weeks)



## DRAMA CLASS FOR K-4<sup>TH</sup> GRADE

In partnership with **Branford Parks and Recreation**

A perfect intro into theatre! Students will explore scenes, music and dance from musicals and plays.

### TWO SESSIONS:

- Saturdays, Oct 14-Nov 11 10:15-11:00 AM (5 weeks)
- Saturdays, Jan 20-Feb 17 10:15-11:00 AM (5 weeks)

## MUSICAL THEATRE PERFORMANCE CLASS

In partnership with **Branford Parks and Recreation**

Students will dive into musical theatre songs and explore how to connect to their songs in meaningful ways.

### MIDDLE SCHOOL

- Session I: Saturdays, Oct 14-Nov 18 11:15-12:15 (6 weeks)
- Session II: Saturdays, Jan 20-Feb 24 11:15-12:15 (6 weeks)

### HIGH SCHOOL

- Session I: Saturdays, Oct 14-Nov 18 12:30-1:30 (6 weeks)
- Session II: Saturdays, Jan 20-Feb 24 12:30-1:30 (6 weeks)



Learn More and Register Today!

Visit [LegacyTheatreCT.org](http://LegacyTheatreCT.org)  
or Call (203) 315-1901 Now!



.....

## TECHNICAL THEATRE CLASS

Sundays, Oct 22 - Feb 25 6-7pm (15 weeks)  
(no Nov 26, Dec 24, Dec 31)

Ages: High School and up

Students will learn components of Technical Theatre from industry professionals at the Legacy Theatre. There will be dedicated sessions for Stage Management, Costume Design, Props Design, Scenic Design, Sound Design, and Lighting Design, with practical application.



.....

## ACTING FOR ADULTS

*In partnership with*  
**Shoreline Adult Education**

Tuesdays, Sept 26-Nov 14 (no class Oct 31)  
6:30-8pm (7 weeks)

A scene study class in which we will explore the basics of acting technique focusing on communication, authenticity, physicality, humor, vulnerability and passion. Class is open to high school students and above. Very little experience is necessary.

.....

## ADULT IMPROV

Wednesdays, Sept. 27 - Nov. 15 6-7:30pm (8 weeks)

Enjoy the exploration of improvisation in 8 weeks of fun and engaging exercises and scenes. Let yourself play again while improving your spontaneity, listening skills and ability to be more present through the art of improvisation. There will be the option of participating in a showcase at The Legacy on Saturday Nov 18 @2pm.

.....

## CREATING YOUR OWN SOLO SHOW

Mondays, Oct 23- Dec 4th 6-7:30pm  
(7 weeks)  
Ages: Middle School - Adult

Over the course of this small class limited to six students, we will explore our life stories and dramatize a moment or happening within them focusing on a ten-minute excerpt which will be staged in the final week of class.

.....

## ADULTS WITH AUTISM ACTING CLASS

*In partnership with* **ASRC at Clifford Beers Community Health Partners**

Tuesdays, 6-7pm Jan 9- Feb 24 (7 weeks)

Fun, interactive classes to practice working on spontaneity and flexibility in a safe and exciting environment in the beautifully restored Legacy Theatre in Branford.



.....

## WHEEL LIFE THEATRE TROUPE

Free to Participants

Saturdays, Beginning Sept. 23 11am-noon  
Fall Showcase at Legacy Theatre, Nov. 18 at 2pm

Join our theatre troupe for those who use mobility devices and their friends/family!

# Anderson Krause

INSURANCE

**We Keep Our Family Tradition  
So You Can Keep Yours**

**Personal & Business  
Insurance**



**Morgan M. Krause CISR, CIC**  
morgan@andersonkrause.com



**Michael A. Krause CIC**  
mkrause@andersonkrause.com

**203.488.6386 | AndersonKrause.com**  
238 East Main Street, Branford, CT

# Legacy Theatre Donors

## GRANTS

CT Dept of Economic & Community  
Development Office of the Arts  
Guilford Community Foundation

CT Dept of Economic & Community  
Development Office of the Arts  
Eversource

Community Foundation of Greater  
New Haven

## 2023 SEASON SPONSORS

*As of September 11, 2023*

*Legacy Theatre gratefully acknowledges support from our Corporate and Foundation Supporters*

### MAINSTAGE SEASON



### MASTERS OF PUPPETS THE BURRY FREDRIK FOUNDATION



### BEAUTY AND THE BEAST

### THE MARTYN FOUNDATION

### THE PLAY THAT GOES WRONG



### SUNDAY BROADWAY CONCERT SERIES

### JANA AND TOM SHEA



### MACK IS BACK! THE MUSIC OF BOBBY DARIN AND MORE!



**ANASTASIO  
TRUCKING**



### FAMILY SERIES



### COMMUNITY SPONSORS



*Support has been provided to Legacy Theatre  
from the Connecticut Arts Endowment Fund and CT Humanities (CTH),  
with funding provided by the Connecticut State Department of Economic and Community  
Development/Connecticut Office of the Arts (COA) from the Connecticut State Legislature.*

## Become a 2023 Sponsor!

Please consider including Legacy Theatre in your 2023 marketing efforts.  
We have sponsorship opportunities for every budget!  
Scan to learn more



## *A round of applause, please!*

A Legacy Theatre Standing Ovation  
to our wonderful behind-the-scenes Guild Members,  
Susan Barnes, Lisa Courtney, Tina Ells, Katina Gionteris, and Kristie Shanahan.

# JOIN THE GUILD!



Legacy Theatre company members join Tony Award-winning actress/singer Nikki M. James onstage after her concert, 2/26/23. Photo by Samuel Bibbins.

- The Legacy Theatre Guild is comprised of dedicated members of the Shoreline East community who come together as a group to support the work and mission of the Legacy Theatre in Stony Creek, CT.
- These “cheerleaders for the performing arts and the creative process” freely give their time and talents to help the full and part-time staff at the Legacy with self-contained service projects; beautifying or updating a neglected or dated area within our actor housing, assembling printed materials for a bulk mailing campaign, helping to prepare or serve cast and company dinners or summer cookouts, etc.
- Active members quickly become part of the Legacy family, gathering when called upon to help in the true spirit of giving. A veritable and enthusiastic “theatre club of volunteers,” Legacy Guild members can soon become the backbone of the not-for-profit arts organization.

For more information  
Contact Managing Director, Jeff Provost  
[JProvost@LegacyTheatreCT.org](mailto:JProvost@LegacyTheatreCT.org)

Valpak is proud to support  
The Legacy Theater



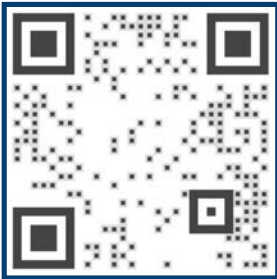
**What can Valpak do for your business?**

Contact us and let's get started building your campaign today!

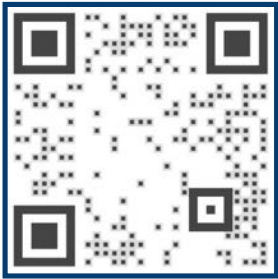
**Mark Barillaro**  
*mark\_barillaro@valpak.com*  
*860.552.8109*

Save more at Valpak.com!

SCAN FOR VALPAK APP



SCAN FOR MORE INFO



# COMING SOON

The Holiday Tradition Returns! November 29 - December 10

"A real triumph, offering a great deal of pleasure and glad tidings."

-Zander Oppen, *Talkin' Broadway*

"Enter the lovely holiday spirit of the performance.

There is no Bah Humbug tolerated here."

- Bonnie Goldberg, *The Middletown Press*

BOOK YOUR  
TICKETS EARLY!



## 2024 SEASON

Season Announcement

Coming in Mid-November!

### CONTACT LEGACY THEATRE

Box Office: (203) 315-1901 (Mon-Fri 10am-3pm)

Email: [Info@LegacyTheatreCT.org](mailto:Info@LegacyTheatreCT.org)

Website: [www.LegacyTheatreCT.org](http://www.LegacyTheatreCT.org)

Gift Certificates available online or through the Box Office.